

2020 IMPACT REPORT



COMMUNITY MATTERS

BADER

PHILANTHROPIES, INC.



“

When you see something
that is not right, not fair, not
just, you have to speak up.
You have to say something;
you have to do something.

- John Lewis

US Congressman & Civil Rights Leader

BADER

PHILANTHROPIES, INC.

MESSAGE FROM THE PRESIDENT/CEO



Bader Philanthropies has an unwavering commitment to investing in communities and the people who live in them.

The COVID-19 global pandemic has afforded every single person— young and old—around the world to define history. The Foundation has witnessed selfless acts of kindness, innovation, and resilience. Our community partners have turned challenge into opportunity learning how to provide “socially distanced” and at times technology-based options for young people to learn the lessons of craftsmanship and teamwork; helping older adults remain safe, healthy and independent in their homes; unleashing artistic talents and energy through dance; and preserving the teaching of Judaic values through day school education.

The Foundation completed renovations on a two-story building adjacent to its global headquarters which is now the home of Shalem Healing, an integrated and holistic care clinic; Refua Medicinals, which blends traditional Chinese medicine and modern nutritional science to enhance the wellbeing of Shalem Healing patients; and Sam’s Place, a jazz café. The tenants bring to life the voices of our neighbors and serves as a physical reminder of what is possible when we live in community.

The practice of Arbing Institute’s Outward Mindset tools has been invaluable in helping Bader Philanthropies “get curious” and “listen longer” to better understand the myriad of needs in our community. It has given us the gift of seeing people as people and to stand with you as we embrace all that has come before us—a global pandemic, civil unrest, an economic downturn and human loss. While circumstances

have not allowed us to bring people together for Outward Mindset trainings, our community partners are practicing the tenets through their compassionate service every single day.

We are excited to share and publicly release, *An Independent Spirit: The Quiet, Generous Life of Helen Daniels Bader* by Priscilla Pardini. *An Independent Spirit: The Quiet, Generous Life of Helen Daniels Bader* brings into sharp focus the story of one of Milwaukee’s most beloved and magnanimous benefactors. Enhanced with more than 250 images—most from family collections—it details Helen Bader’s remarkable touching journey—one steeped in a lifetime of humility, determination, resistance and empathy for others, that played out amid years of personal disappointment and sorrow. Rising to the challenges thrown her way, Helen set an example that persists today as a model well worth emulating.


As we close the year, we know the events of this past year will undoubtedly bring moments of sadness. But, we hope the pages that follow provide you with moments of joy and pride as you see the Harambee neighborhood’s Swahili translation, “all pull together” in action around the world.

Best wishes,

A handwritten signature in black ink, appearing to read 'D.J. Bader'.

Daniel J. Bader

BIG PICTURE.



“

Make a difference
about something other
than yourselves.

- **Toni Morrison**
Novelist



BIG PICTURE // CURRENT EVENT

COVID-19 GRANTS & SPECIAL INITIATIVES

Since March 26, 2020, Bader Philanthropies has provided **62 emergency grants** totaling **\$1,407,650** to Wisconsin organizations offering programs and services in direct response to the COVID-19 pandemic.



**FEEDING AMERICA
EASTERN WISCONSIN
FOOD PICK-UP**



**WESTCARE WISCONSIN
FOOD PICK-UP
HARAMBEE**



**MILWAUKEE CENTER FOR
INDEPENDENCE FOOD
PICK-UP SOUTHSIDE**

COVID-19 GRANTS

RECIPIENTS

4th Dimension Sobriety, Inc.

African American Breastfeeding Network, Inc.

Alma Center, Inc.

Arts at Large, Inc.

City On A Hill, Inc.

Columbia St. Mary's Foundation, Inc.

Dr. James Cameron Legacy Foundation, Inc.

Elmbrook Senior Taxi, Inc.

ERAS Senior Network, Inc.

Faith in Action of Marathon County, Inc.

Feeding America Eastern Wisconsin, Inc.

Fresh Start Learning, Inc.

Greater Milwaukee Foundation, Inc.

Health Connections, Inc.

Hmong/American Friendship Association, Inc.

Hope House of Milwaukee, Inc.

Imagine MKE, Inc.

Impact Alcohol & Other Drug Abuse Services, Inc.

Islands of Brilliance, Inc.

Jewish Beginnings Lubavitch Preschool, Inc.

Jewish Family Services, Inc.

Junior Achievement of Wisconsin, Inc.

Lutheran Social Services of Wisconsin and
Upper Michigan, Inc.

Meals On Wheels of Sheboygan County, Inc.

Milwaukee Center for Independence, Inc.

Milwaukee Christian Center, Inc.

Milwaukee Jewish Free Loan Association, Inc.

Milwaukee Rescue Mission

Muslim Community and Health Center
of Wisconsin, Inc.

Neighborhood House of Milwaukee, Inc.

Nia Imani Family, Inc.

Northcott Neighborhood House, Inc.

Park Place, Adult Day Services, Inc.

Prism Economic Development Corporation
(Prism EDC)

Riverwest Artists Association, Inc.

Saint Francis Children's Center, Inc.

Saukville Community Food Pantry, Inc.

Shalem Healing, Inc.

Silver Spring Neighborhood Center, Inc.

Sixteenth Street Community Health Centers, Inc.

Sojourner Foundation, Inc.

St. Ann Center for Intergenerational Care, Inc.

St. Marcus Evangelical Lutheran Church, Inc.

St. Vincent De Paul Society of Milwaukee

The Best Camp, Inc.

The Gathering of Southeast Wisconsin, Inc.

The Guest House of Milwaukee, Inc.

The Middle Ground, Inc.

The Milwaukee Jewish Federation, Inc.

The Parenting Network, Inc.

The Pastime Club, Inc.

Torah Academy of Milwaukee for Girls, Inc.

TRUE Skool, Inc.

United Methodist Children's Services
of Wisconsin, Inc.

Variety - The Children's Charity of Wisconsin, Inc.

Vessels of God, Inc.

Westcare Wisconsin, Inc.

Wis Hope, Inc.

Wisconsin Center For Nursing, Inc.



“

Always show more kindness than seems necessary, because the person receiving it needs it more than you will ever know.

- **Colin Powell**

Former US Secretary of State
and Four-Star General

OUR PROGRAMS.



“

Excellence is to do a common
thing in an uncommon way.

- **Booker T. Washington**
American Educator



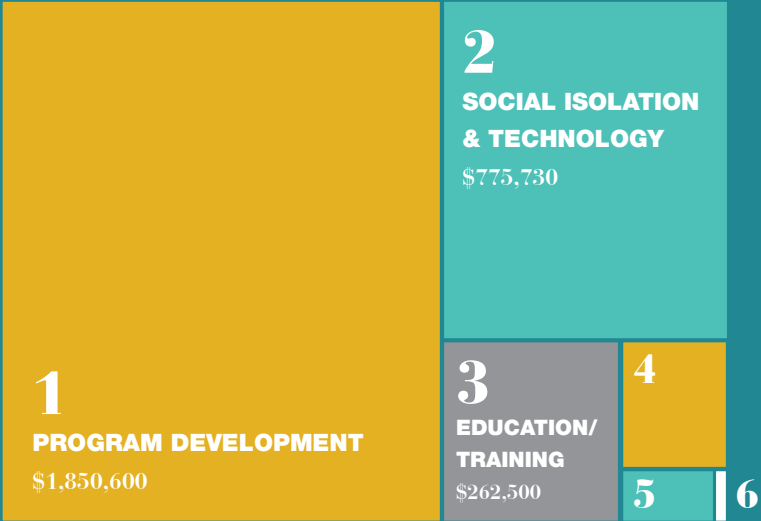
ALZHEIMER'S & HEALTHY AGING

TOTAL GRANTS

88

TOTAL DOLLARS

\$3,054,830



4 APPLIED RESEARCH \$115,000 5 TECHNOLOGY \$42,500
6 OTHER \$8,500



PROGRAM STORY

WASHINGTON ISLAND COMMUNITY HEALTH PROGRAM WICHP

WICHP's mission statement is "to empower and support Island residents to make choices for successful aging, to maintain a safe and independent lifestyle and to make informed decisions about their health care." The target group is seniors age 60 and above. Programs include in-home supportive care, advocacy, medical equipment, medical travel fund, Meals on Wheels, monthly education/outreach luncheons, blood pressure clinics, referrals and connection to in home services (ie: Wraparound, LifeAssist, Unity, Memory Care, Door-Tran, Door CANcer, Neighbor to Neighbor, Food Pantry and Community Van).

“

You are never too old to
set another goal or to
dream a new dream.

- **C.S. Lewis**
Writer

ALZHEIMER'S- ISRAEL

TOTAL GRANTS

6

TOTAL DOLLARS

\$151,500





PROGRAM STORY

EMDA

EMDA, the Alzheimer's Association of Israel, was founded in 1988 by family members of people with Alzheimer's disease and other forms of dementia. In 2017, EMDA worked with key partners to adapt the global Dementia Friends model to help those with Alzheimer's remain part of the community, tailoring it for Israel's unique cultural needs. Each Dementia Friend can be a neighbor, worker, or community member who learns how to be more aware of those with dementia in the community, and what small gestures can help make their interactions more positive for everyone.

“

Though those with Alzheimer's might forget us, we as a society must remember them.

- Scott Kirschenbaum
 Filmmaker, *You're Looking at Me Like I Live Here and I Don't*

SOCIAL EQUALITY

TOTAL GRANTS

44

TOTAL DOLLARS

\$2,313,000

1

CULTURAL RECOGNITION
& CIVIC RESPONSIBILITY

\$938,500

2

ECONOMIC
OPPORTUNITY
& EMPLOYMENT

\$777,500

3

IMPROVING EDUCATIONAL OPPORTUNITIES

\$597,000

PROGRAM STORY

MATI

MATI-Jerusalem offers entrepreneurship programs that help aspiring small business owners across the city to start a viable business or to build an existing one. In the neighborhoods of East Jerusalem, poverty rates are high, with less than one-in-three women participating in the workforce full time, so small businesses provide a culturally relevant way to increase families' earned income. At its East Jerusalem hub, MATI offers various tracks that empower local women through increased confidence and new skills, as well as the wider networks that are essential to successful enterprises.



How you climb a mountain is more important than reaching the top.

- Yvon Chouinard
Patagonia Founder



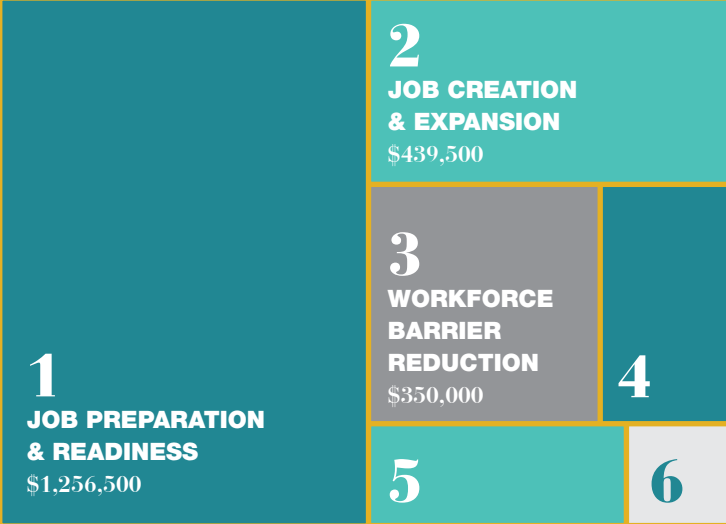
EMPLOYMENT

TOTAL GRANTS

42

TOTAL DOLLARS

\$2,491,000



4 LINK TO EXISTING/EMERGING JOBS \$205,000

5 SPUR COLLABORATION \$170,000 6 OTHER \$70,000

PROGRAM STORY

I.C.STARS

I.C.Stars trains young adults to enter the tech sector. Participants learn by doing; building web-based applications to solve the challenges facing employers in the tech industry with coding, business, and leadership instruction provided along the way. Young adults also gain the professional network needed to jumpstart their careers. Each person is chosen after 12 hours of assessments from a candidate pool of approximately 350 before going into a cohort of 20. I.C.Stars begins with a four month immersion, where participants respond to a request for proposal from a corporate partner. Participants develop employer-facing soft skills through leadership workshops. Following the bootcamp, support continues for 20 months with career assistance, higher education support, case management and counseling. Three cohorts are trained per year.



Far and away the best prize that life offers is the chance to work hard at work worth doing.

- Theodore Roosevelt
US President



PROGRAM RELATED INVESTMENT

TOTAL PRIs

5

TOTAL DOLLARS

\$1,381,000



3 INVESTMENTS LEVERAGED \$16,000



PROGRAM STORY

VOLUNTEER CENTER OF WASHINGTON COUNTY HUB COFFEE SHOP

Founded in 1983, the Volunteer Center of Washington County was established as a single place to connect community members with meaningful volunteer opportunities. Today, the Volunteer Center matches nearly 10,000 people each year with volunteer opportunities at 50+ community organizations. With core programs like the Do Good Bus, Camp Super Hero and day-to-day volunteer matching which supports the local nonprofit community, the organization is always seeking new ways to connect with the next level of Washington County residents. Recently, the Volunteer Center purchased a facility. This has given them an opportunity to expand into the remaining space in the building. In addition to their volunteer-run coffee shop, “The Hub - Social Good Brews,” the organization is renovating the vacant areas in the building

to create a community gathering space and commercial kitchen for catering and to support The Hub coffee shop. It is more than a gathering space; it is a place where activities and programs engage and strengthen the community as a whole. Aligned with the organization’s mission, the expanded space will mobilize volunteers and resources to improve the quality of life in Washington County. It will also open the doors to more individuals, families, school groups, nonprofits and businesses looking to engage with their community. More space for mission-forward activities like educational workshops, fundraising events, and core Volunteer Center programs will help inspire volunteerism and benefit nonprofit partners.

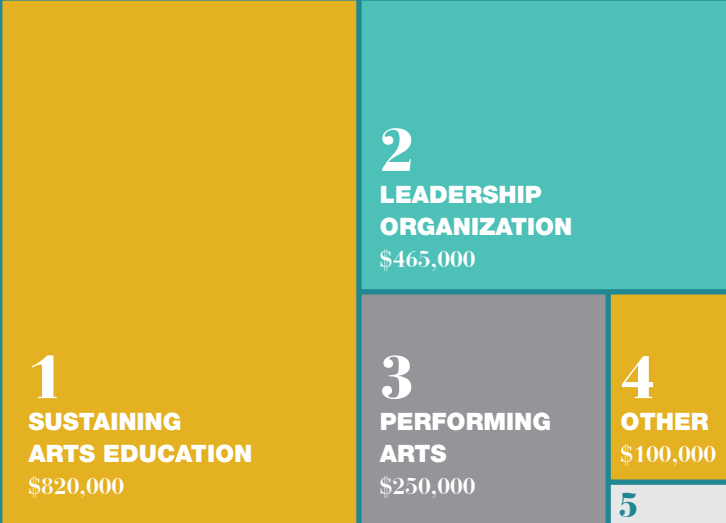
THE ARTS

TOTAL GRANTS

46

TOTAL DOLLARS

\$1,660,000



5 VISUAL ARTS \$25,000



PROGRAM STORY

ABOVE THE CLOUDS

Above the Clouds uses creativity and movement through its classes, internships, and scholarships to fulfill its commitment to connect children to the arts. It offers a wide range of courses such as ballet, hip-hop and martial arts. Since 2001, Above the Clouds has provided free, faith-based art programs and educational training to inspire young students, ages 5-17 in the Milwaukee area. Above the Clouds has served 7,780 young people over the years.



You use a glass mirror to see your face; you use works of art to see your soul.

- George Bernard Shaw
Playwright

URBAN & JEWISH EDUCATION

TOTAL GRANTS

31

TOTAL DOLLARS

\$1,269,000



4 TEACHER DEVELOPMENT (URBAN EDUCATION) \$35,000

5 LEADERSHIP DEVELOPMENT (URBAN EDUCATION) \$10,000

6 STAFF TRAINING (JEWISH EDUCATION) \$5,000

PROGRAM STORIES

UNITED COMMUNITY CENTER UCC

United Community Center assists individuals in achieving their potential by focusing on cultural heritage as a means of strengthening personal development and by promoting high academic standards in all of its educational programs. UCC works to provide programs to Hispanics and near south side residents of all ages in the areas of education, cultural arts, recreation, community development, and health and human services. UCC's early childhood facility was renovated to create a fully operational childcare center that addresses the educational, social, emotional and health needs of children living in the south side of Milwaukee.

YESHIVA ELEMENTARY SCHOOL YES

Yeshiva Elementary School (YES) in the heart of Milwaukee's Sherman Park neighborhood offers a comprehensive K-8 curriculum which weaves in Judaic heritage and values. The school exists today through the vision of parents seeking to provide children with a quality Judaic education that prepares them for life. For more than 30 years, YES has actively engaged students in learning using technology, storytelling and the arts to ensure that students can reach their full academic potential.



YOUTH DEVELOPMENT

TOTAL GRANTS

64

TOTAL DOLLARS

\$2,077,500



PROGRAM STORY

ALL HANDS BOATWORKS

All Hands Boatworks' mission is to build the capacities, talents, resilience, and futures of Milwaukee's youth through STEM-focused wooden boatbuilding projects, work-based learning experiences, and on-the-water activities that foster the development of character, educational success, and workforce preparation. All Hands Boatworks has taught the craft of wooden boatbuilding to more than 2,500 youth ages 10 to 24 since 2013.



If you want to build a ship, don't just drum up people to collect wood, and don't just assign them tasks and work, but rather teach them to long for the sea.

- Antoine de Saint-Exupéry
French Writer



COMMUNITY MATTERS

TOTAL GRANTS

103

TOTAL DOLLARS

\$4,416,235



4 OTHER \$185,000 5 BOARD RELATED \$155,000
6 DUES \$63,485 7 CULTURE \$21,000



PROGRAM STORY

MILWAUKEE HABITAT FOR HUMANITY

Milwaukee Habitat for Humanity, a nonprofit helping families in need of safe, affordable housing, launched a neighborhood revitalization project in the Harambee neighborhood. With an initial grant of \$1 million from Bader Philanthropies, Inc., Milwaukee Habitat for Humanity will be establishing 40 new homes, ensuring current homeowners can avoid foreclosure and stay in their homes. Milwaukee Habitat for Humanity also plans to complete 20 critical repair projects in Harambee over the next four years, serving more than 200 of the community's residents.

“

We should learn to live and love our neighbors as ourselves for the sake of peace and progress.

- David McCallum
Actor

NEIGHBORHOOD ENGAGEMENT

TOTAL GRANTS

24

TOTAL DOLLARS

\$261,250



PROGRAM STORY

WESTCARE WISCONSIN

Westcare empowers everyone with whom they come in contact, especially individuals struggling with a combination of economic, employment, health and environmental burdens. The organization offers programming and services addressing basic human needs such as food, housing, and clothing, and facilitates youth leadership development, job readiness and community engagement projects.



To the world you may
be one person. But, to
one person, you may
be the world.

- Dr. Seuss

OUR STORIES.

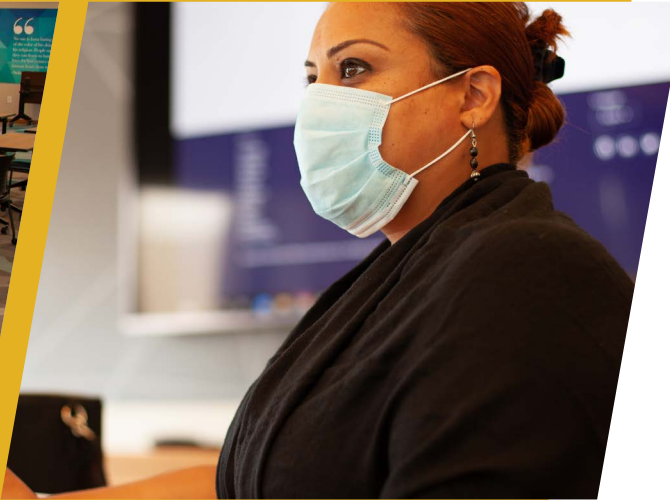


“

In every moment...we choose to see others either as people like ourselves or as objects. They either count like we do or they don't.

- **The Arbinger Institute**





OUR STORIES

CONVENINGS REIMAGINED

In less than two months, our convening space was reimagined so Westcare Wisconsin's Youth Advisory Council could come together for their weekly Friday programs featuring speakers and group work. Small groups could continue to meet face-to-face socially distanced using state-of-the-art technology to ensure critical conversations could happen amid a global pandemic.

60

ORGANIZATIONS

210

EVENTS

5,862

GUESTS SERVED

CONVENINGS

PARTICIPANTS

4th Dimension Recovery Centers

African American Breastfeeding Network, Inc.

African American Leadership Alliance MKE

Bader Hillel Academy

Board of Regents of the University of
Wisconsin System

City of Milwaukee

Congregation Beth Jehudah, Inc.

Down Syndrome Association of Wisconsin, Inc.

Dr. Martin Luther King, Jr. Elementary School

Eastcastle Place

Federal Reserve Bank of Chicago

Foundations Health & Wholeness

Greater Green Bay Community Foundation, Inc.

Greater Milwaukee Foundation, Inc.

Havenwoods Economic Development Corporation

Health Data Users Group

Helen Bader Institute for Nonprofit Management

Helen Bader School of Social Welfare

Illinois Facilities Fund

JCP Construction

Leadership Circle

Local Initiatives Support Corporation

Marquette University

Martin Luther King Economic
Development Corporation

Milwaukee Community Justice Council

Milwaukee Jewish Day School, Inc.

Milwaukee Youth Sports Alliance

MKE LGBT Community Center

NATAL

Next Door Foundation, Inc.

Nonprofit Management Fund

North Central Service Club, Inc.

Office of Early Childhood Initiatives

Revitalize Milwaukee, Inc.

Safe and Sound, Inc.

Scaling Wellness In Milwaukee (SWIM)

Serenity Inns, Inc.

Shalem Healing, Inc.

Sojourner Foundation, Inc.

SSI/SSDI Outreach, Access,
and Recovery (SOAR)

The Gathering of Southeast Wisconsin, Inc.

The Milwaukee Jewish Federation, Inc.

The People's Movement of Milwaukee

The People's Revolution

United Performing Arts Fund, Inc.

Unity in Motion, Inc.

University of Milwaukee - School of Education

University of Wisconsin - Milwaukee

University of Wisconsin - Parkside

Urban Ecology Center, Inc.

UW Center for Cooperatives - Madison

Victory Garden Initiative, Inc.

Waukesha County Department on Aging

Westcare Wisconsin, Inc.

Wisconsin CREW

Wisconsin Policy Forum, Inc.

Wisconsin Women's Business Initiative
Corporation

Yeshiva Elementary School - Milwaukee, Inc.

Young Development Group, LLC

Young Nonprofit Professionals Network
(YNPN) Greater Milwaukee Chapter

OUR STORIES

COVID-19 PUBLIC TESTING

16

TEST DATES

1,520

TESTS ADMINISTERED



FOOD DONATIONS

6

ORGANIZATIONS



61

FOOD DONATIONS

2,000

SERVED



OUR STORIES

NEW NEIGHBORS

SAM'S PLACE, SHALEM HEALING & REFUA MEDICINALS MOVE INTO HARAMBEE

Bader Philanthropies, Inc. renovated a two-story building located at the corner of Dr. Martin Luther King, Jr. Drive and Fifth Street, across from its global headquarters at 3300 N. Dr. Martin Luther King, Jr. Drive in the Harambee neighborhood. The renovated building is now occupied by three tenants—Shalem Healing, Inc., Refua Medicinals and Sam's Place.

Shalem Healing, formerly located in the Riverwest neighborhood, offers a wide range of integrated medical and holistic care to more than 3,000 patients annually. The medical care provided by Shalem Healing is at a reduced rate or on a sliding scale based on the patient's income.

"Shalem Healing's commitment to holistic wellness, especially for people living in the underserved areas of the city, is the core of what we do," said Dr. Robert Fox, Shalem Healing's founder and executive director. "It is simple —we want to make holistic care such as herbal medicine, acupuncture, food as medicine, stem cell treatment, nutraceuticals, and proper education on seemingly chronic diseases accessible to the residents living in Harambee and many others who will travel from around Milwaukee."

Refua Medicinals brings together traditional Chinese medicine and modern nutritional science. The result is an array of teas that enhance the well being of Shalem Healing patients and other health conscious consumers.

Sam's Place will be the second location in Milwaukee for CITY.NET Jazz Café, Milwaukee's Jazziest Coffeehouse. "Sam's Place is all about community," said Sam Belton, owner of Sam's Place. "People from all walks of life can gather here, meet a friend or neighbor, and connect for a meeting in a great eatery while experiencing the sounds of classic jazz. Patrons can also enjoy freshly roasted coffee on site and expect live performances from local and national artists. Our roots are deep in Milwaukee and we are dedicated to rebuilding our community."

"Harambee residents gather at 'Chat with Bader' events to reminiscence, share resources and speak their minds," said Milwaukee 6th District Alderwoman Milele A. Coggs. "Time and time again, I have heard residents talk about how much they miss having a place to go to meet a friend for coffee, listen to music or how challenging it can be to care for their physical wellbeing. It is inspiring to know that Sam's Place and Shalem Healing will soon be serving the needs of Harambee residents and beyond."



OUR LEGACY.



“

Who is wise? One who learns from every man... Who is strong? One who overpowers his inclinations... Who is rich? One who is satisfied with his lot... Who is honorable? One who honors his fellows.

- Ben Zoma

Ethics of the Fathers, 4:1



OUR LEGACY

QUEEN'S UNIVERSITY

Bader Philanthropies made its largest grant award—\$40 million (USD)—to Queen's University to revitalize and expand the Agnes Etherington Art Centre and create a new home for the Bader Collection.

The philanthropic investment has the potential to create one of the largest university art museums in Canada and will help Queen's researchers and students play a fundamental role in enabling societies to better understand, protect, and experience the world's artistic and cultural treasures.

The revitalized Agnes will create a single hub for the presentation, research, and study of visual arts on campus. The facility will include the Art Centre, as well as homes for the graduate program in Art Conservation, and the Art History undergraduate and graduate programs.

GRANT AWARDED

\$40,000,000





“

Art is an effort to create,
beside the real world,
a more humane world.

- Andre Maurois
French Author

OUR LEGACY

HELEN DANIELS BADER JEWISH EDUCATION FUND

In 2020, the Milwaukee Jewish Federation created the Helen Daniels Bader Jewish Education Fund, the largest permanent endowment for Jewish education in Wisconsin. The \$12 million endowment replaces the Helen Bader Scholarship Fund, which had received \$500,000 in annual donations from Bader Philanthropies, Inc., since 1992. The endowment will make 30 percent more funds available for the six Jewish schools; in the 2020-2021 school year, the amount distributed to schools is likely to exceed \$675,000.

The endowment went into effect at the beginning of the school year in fall of 2020. The funds are no longer limited to tuition assistance, as previously required; schools may use the monies

for other initiatives such as teacher benefits, updating facilities, materials for classes, and more. More than 660 students are currently enrolled across the six schools: Bader Hillel Academy (BHA), Bader Hillel High (BHH), Milwaukee Jewish Day School (MJDS), Torah Academy of Milwaukee (TAM), Wisconsin Institute for Torah Study (WITS) and Yeshiva Elementary School (YES).

“Investment in Jewish education with this type of endowment is unique for a community our size,” said Miryam Rosenzweig, Milwaukee Jewish Federation’s President and CEO. “A child’s education is a long-term investment, and with the Helen Daniels Bader Jewish Education Fund, we can ensure cost is not a reason for families to turn away from our schools.”





BADER HILLEL ACADEMY



BADER HILLEL HIGH



MILWAUKEE JEWISH DAY SCHOOL



**TORAH ACADEMY
OF MILWAUKEE**



**WISCONSIN INSTITUTE
FOR TORAH STUDY**



YESHIVA ELEMENTARY SCHOOL

OUR LEGACY

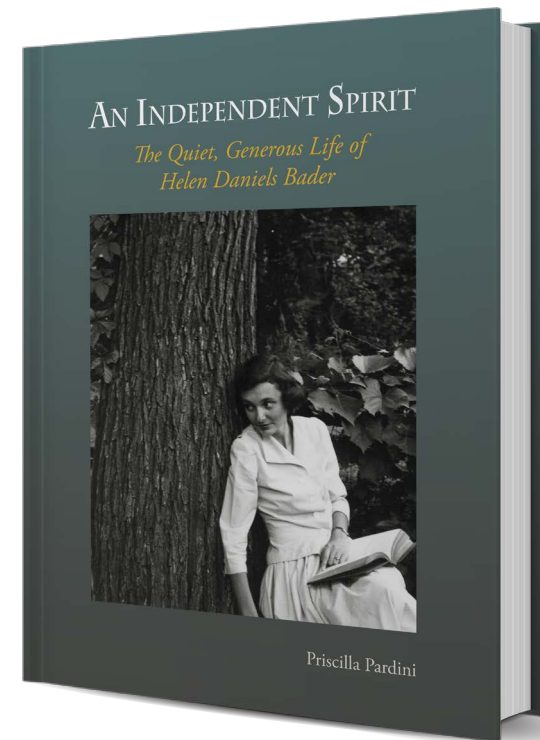
AN INDEPENDENT SPIRIT

THE QUIET, GENEROUS LIFE OF HELEN DANIELS BADER

In the midst of the COVID-19 pandemic, Bader Philanthropies published *An Independent Spirit: The Quiet, Generous Life of Helen Daniels Bader* by local writer and editor, Priscilla Pardini.

An Independent Spirit brings into sharp focus the story of one of Milwaukee's most beloved and magnanimous benefactors. The book details a remarkable touching journey—one steeped in a lifetime of humility, determination, resistance and empathy for others, that played out amid years of personal disappointment and sorrow. Rising to the challenges thrown her way, Helen Daniels Bader set an example that persists today as a model well worth emulating.

Her legacy is significant. The \$100 million Helen Daniels Bader Foundation was established in 1991, two years after her death; over the next 24 years, it awarded \$250 million in grants designed to advance the well-being of the impoverished and disadvantaged. And, today, her life—and specifically her belief in the value of social work—is further immortalized through the Helen Bader School of Social Welfare at the University of Wisconsin-Milwaukee.





OUR IMPACT.



“

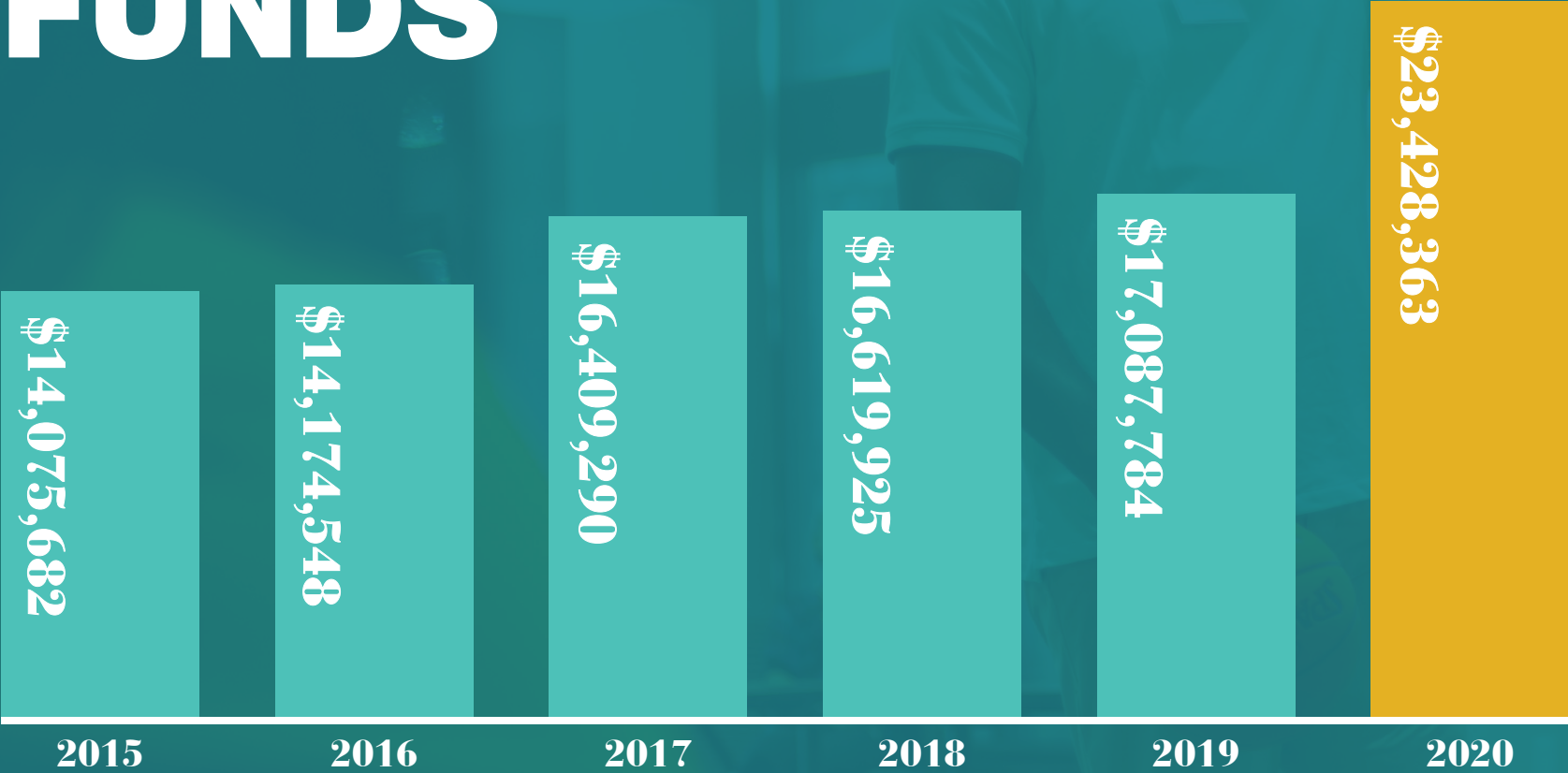
There are so many things
you can learn about.
But you'll miss the best
things if you keep
your eyes shut.

- **Dr. Seuss**

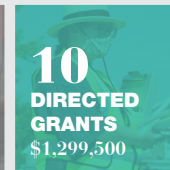
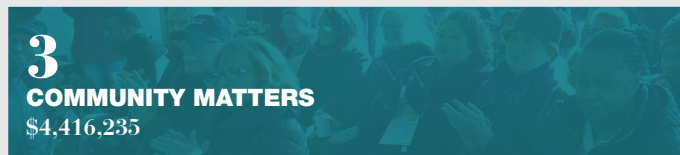


OUR IMPACT

DISTRIBUTED FUNDS



APPROVED FUNDING BY PROGRAM AREA



12 NEIGHBORHOOD ENGAGEMENT \$261,250 13 ALZHEIMER'S-ISRAEL \$151,500

OUR IMPACT

2020 GRANTS & PRIs

**Program Related Investment(s)*

***Program Related Investment(s) & Grant(s)*

4th Dimension Sobriety, Inc.

50 50 Startups, Inc.

A.F.A.R., Inc.

Above the Clouds, Inc.**

African American Breastfeeding
Network, Inc.

African American Chamber of
Commerce of Wisconsin, Inc.

AIDS Resource Center of
Wisconsin, Inc.

Ajeec - Negev Institute (a.r.)

Albany Pro Musica, Inc.

Alive Mke, Inc.

All 4 Kidz, Inc.

All Hands Boatworks, Inc.

Alliance for Strong Families and
Communities

All-In Milwaukee, Inc.

Alma Center, Inc.

AlManarah - Association for the
Advancement of Disabled
Persons (a.r.)

Alzheimer's Disease and Related
Disorders Association, Inc.
(Wisconsin Chapter)

Amanina (a.r.)

American Committee for the Tel
Aviv Foundation

American Friends of The Hebrew
University, Inc.

American Jewish Joint Distribution
Committee, Inc.

Amery Area Senior Citizens, Inc.

Ara Art, z.s.

Artists Working in Education, Inc.

Arts at Large, Inc.

ArtWorks For Milwaukee, Inc.

Ashuja'an Association for Juvenile
Diabetes (a.r.)

ASSAF Aid Organization for Asylum
Seekers and Refugees in Israel (a.r.)

Association for the Integration
of Minorities

Association of Friends of the Israel
Museum in Jerusalem (a.r.)

Atid Plus Fund for Education in
Israel (a.r.)

Audio & Braille Literacy
Enhancement, Inc.

Averroma (z.s.)

Bar-Kayma for Culture, Art, Music,
and Peace (a.r.)

Be-Atzmi (a.r.)

Bellin College, Inc.

Best Buddies International, Inc.

Betty Brinn Children's Museum, Inc.

Between Heaven and Earth (a.r.)

Big Brothers and Big Sisters of
Metropolitan Milwaukee, Inc.

BizStarts Milwaukee, Inc.

Black Arts MKE, Inc.

Blue Lotus Farm & Retreat Center

Board of Regents of the University
of Wisconsin System

Board of Regents of the University of Wisconsin System - University of Wisconsin Parkside	Children's Hospital of Wisconsin Foundation, Inc.	Dominican Center for Women, Inc.	Faith in Action of Marathon County, Inc.
Board of Regents of the University of Wisconsin System - UW-Superior	Citizens Build a Community (a.r.)	Door County Habitat For Humanity, Ltd.	Faith in Action Washburn County UA
Bokra Guide - Association for the Development of Communication Strategies in the Israeli Arab Society (a.r.)	City Net Cafe Abyssinian Coffee Roasters LLC*	Door County Young Men's Christian Association, Inc.	Family Caregivers Rock, Inc.
Boys & Girls Clubs of Greater Milwaukee, Inc.	City of Milwaukee	Down Syndrome Association of Wisconsin, Inc.	Feeding America Eastern Wisconsin, Inc.
Branco Weiss Institute - Think, Innovate, Educate (a.r.)	City of Oshkosh	Dr. James Cameron Legacy Foundation, Inc.	Fellowship Open, Inc.
BraveHearts Therapeutic Riding and Educational Center	City On A Hill, Inc.	Dror Growth Basis (a.r.)	First Stage Milwaukee, Inc.
Burleigh Street Community Development Corporation, Inc.	City Year, Inc.	Early Music Now, Inc.	Fisc Consumer Credit Counseling of Door County, Inc.
Candid	Civic Leadership (a.r.)	Eau Claire Area Hmong Mutual Assistance Association, Inc.	Florentine Opera Company, Inc.
Cannedwater4kids, Inc.	Clearwater Foundation, Inc.	Eco-Justice Center, Inc.	Folklore Village Farm, Inc.
Carroll University, Inc.	COA Youth and Family Centers, Inc.	Elmbrook Senior Taxi, Inc.	Fresh Start Learning, Inc.
Casa Romero Renewal Center, Inc.	Colliers Training Institute, Inc.	EISabar Association (a.r.)	Friends of the Kaukauna Public Library
CEDU - Centre for Democracy in Education	Columbia St. Mary's Foundation, Inc.	EMDA - Dementia, Alzheimer's and Related Diseases Association of Israel (a.r.)	Friends of Wehr Nature Center, Inc.
Center For Veterans Issues, Ltd.	Community Advocates, Inc.	Epic Center Community Organization, Inc.	Friendship Circle Delaware Valley North, Inc.
Central City Churches, Inc.	Community Clothes Closet, Inc.	ERAS Senior Network, Inc.	GiGi's Playhouse-Milwaukee, LLC
Centro Legal Por Derechos Humanos, Inc.	Concordia University, Inc.	Eretz - Academics for Public Service (a.r.)	GPS Education Partners, Inc.
Cesta von o.z.	Congregation Beth Jehudah, Inc.	ERIC'E - Empowerment and Resilience in Children Everywhere (r.a.)	Grantmakers In Aging, Inc.
Chabad Lubavitch of Doylestown	Congregation of St. John's Cathedral	European Foundation Centre	Great Lakes Community Conservation Corps, Inc.
Charlie Karlín, z.ú.	CORE/EI Centro, Inc.	Ex Fabula, Inc.	Greater Green Bay Chamber of Commerce Foundation, Inc.
Children's Crisis Treatment Center, Inc.	Council on Foundations, Inc.	Exponent Philanthropy	Greater Green Bay Community Foundation, Inc.
Children's Dyslexia Centers, Inc.	Cristo Rey Jesuit High School Milwaukee, Inc.	Express Yourself, Milwaukee, Inc.	Greater Milwaukee Committee for Community Development
	Cross Evangelical Lutheran Church	Faculty of Arts, Charles University	Greater Milwaukee Foundation, Inc.
	Curative Connections, Inc.		Gush Etzion Foundation
	Czech Chemical Society		Hadassah Academic College (a.r.)
	Czech Fundraising Center		
	Danceworks, Inc.		
	Data You Can Use, Inc.		

Hakem (PSC)	Interfaith Caregivers of Ozaukee County, Inc.	KHER, z.s.	Makom LeKulam - Promoting integration in the community (a.r.)
HaMiffal - Cooperative Society Ltd.	Islands of Brilliance, Inc.	Kids from Wisconsin, Ltd.	Malaika Early Learning Center, Inc.
Harry and Rose Samson Family Jewish Community Center, Inc.	J.K. Lee City Youth Martial Arts Program, Inc.	Koret Israel Economic Development Funds (a.r.)	Marcus Center for the Performing Arts, Inc.
Have-Rut (p.s.c.)	Jacarrie Kicks For Kids, Inc.	Ko-Thi, Inc.	Marquette University
Health Connections, Inc.	Jackson County Interfaith Volunteer Caregivers, Inc.	L.A. Mayer Museum for Islamic Art (a.r.)	Martin Luther King Economic Development Corporation
Highland Community School, Inc.	Jerusalem African Community Center	La Causa, Inc.	Masaryk University - Department of Chemistry
Hillel Academy, Inc.	Jerusalem International YMCA (a.r.)	Lake Park Synagogue, Ltd.	MATi Ra'anana (a.r.)
Hinneni Amuta for the Advancement of the Absorption of the Jews of Ethiopia (a.r.)	Jewish Beginnings Lubavitch Preschool, Inc.	Lasta Wahdak Association for the Support and Integration of the Disabled (a.r.)	Mazar - Center for Advancement of Education in the Arab Sector (a.r.)
Hispanic Professionals of Greater Milwaukee, Inc.	Jewish Family Services, Inc.	Latino Arts, Inc.	Meals On Wheels of Sheboygan County, Inc.
Hmong American Women's Association	Jewish Funders Network	Lauder's Kindergarten, Elementary School and Grammar School at the Jewish Community in Prague	Medical Center Foundation of Hartford, Inc.
Hmong/American Friendship Association, Inc.	Jewish Home & Care Center Foundation, Inc.	Leaders of the Future (a.r.)	MEET - Middle East Education Through Technology (a.r.)
Hope House of Milwaukee, Inc.	Jewish National Fund -Keren Kayemeth Lelsrael-, Inc.	Leadership Forum, Inc.	Melabev-Community Center for Eldercare (a.r.)
Hope Street Ministry, Inc.	Jewish Social Services of Madison, Inc.	Lehetiv, Doing good in the world (a.r.)	Menomonee Valley Partners, Inc.
Hotline for Refugees and Migrants (a.r.)	Joint Israel (PBC)	Life Changing Ministries, Inc.	Mequon Jewish Preschool, Inc.
Imagine MKE, Inc.	Journey House, Inc.	Lifestriders, Inc.	Mequon Nature Preserve, Inc.
Impact Alcohol & Other Drug Abuse Services, Inc.	Junior Achievement of Wisconsin, Inc.	Lighthouse Youth Center, Inc.	Merchavim – The Institute for Shared Citizenship in Israel (a.r.)
Impact Cubed	Just One More Ministry, Inc.	Lissan (a.r.)	Meriter Foundation, Inc.
Inner-City-Computer Stars Foundation, Inc.	Kairos Alive!	Literacy Lab	Messmer Catholic Schools, Inc.
Institute for Debt Prevention and Resolution	Kathy's House, Inc.	Local Initiatives Support Corporation	Meta House, Inc.
Institute for the Study of Totalitarian Regimes	Kav Laoved (a.r.)	Lubavitch of Wisconsin, Inc.	MetroGO!, Inc.
Institute of Contemporary History of the Czech Academy of Sciences	Kav Mashve (a.r.)	Lutheran Social Services of Wisconsin and Upper Michigan, Inc.	Mile Bluff Medical Center, Inc.
	Keshet-The Home for Special Families (a.r.)	MacCanon Brown Homeless Sanctuary, Inc.	Milwaukee Alliance for Jewish Reconnection, Inc.

**Program Related Investment(s)*

Milwaukee Area Technical College
Foundation, Inc.

Milwaukee Art Museum, Inc.

Milwaukee Artist Resource
Network, Inc.

Milwaukee Ballet Company, Inc.

Milwaukee Bar Association
Foundation, Inc.

Milwaukee Center for
Independence, Inc.

Milwaukee Chamber Theatre, Ltd.

Milwaukee Christian Center, Inc.

Milwaukee Community Business
Collaborative, Inc.

Milwaukee County Historical Society

Milwaukee Film, Inc.

Milwaukee Habitat for Humanity, Inc.

Milwaukee Institute of Art
& Design, Inc.

Milwaukee Jewish Day School, Inc.

Milwaukee Jewish Free Loan
Association, Inc.

Milwaukee Kickers Soccer Club, Inc.

Milwaukee Public Library
Foundation, Inc.

Milwaukee Public Schools
Foundation, Inc.

Milwaukee Public Schools-Dr. Martin
Luther King Jr. Elementary School

Milwaukee Rescue Mission

Milwaukee Riverkeeper, Inc.

Milwaukee Tennis & Education
Foundation, Inc.

Milwaukee Urban League

Milwaukee Youth Arts Center, Inc.

Milwaukee Youth Symphony
Orchestra, Inc.

Mission Investors Exchange, Inc.

MKE Urban Stables, Inc.

Museum of Romani Culture

Muslim Community and Health
Center of Wisconsin, Inc.

Nativity Jesuit Academy, Inc.

Nazareth Nursery Institute (a.r.)

Neighborhood House of
Milwaukee, Inc.

Neu-Life Community
Development, Inc.

New Beginnings Are Possible, Inc.

New Berlin Senior Taxi, Inc.

Next Act Theatre, Inc.

Next Door Foundation, Inc.

Nia Imani Family, Inc.

Nini Czopp Association (a.r.)

North Central Service Club, Inc.

North Country Independent
Living, Inc.

Northcott Neighborhood House, Inc.

Northland Foundation, Inc.

Ogen - Free Loan Fund (r.a.)

Optimist Theatre, Inc.

Paralyzed Veterans of America –
Wisconsin Chapter, Inc.

Park Place, Adult Day Services, Inc.

Pathfinders Milwaukee, Inc.

Penfield Children's Center, Inc.

Penfield Montessori Academy, Inc.

Philanthropy Roundtable

Physicians for Human Rights
in Israel (a.r.)

Playworks Education Energized

Pointing Out the Great
Way Foundation

Present Music, Inc.

PresenTense Israel, Ltd. (CC)

Prism Economic Development
Corporation (Prism EDC)

Project R.E.T.U.R.N., Inc.

Public Allies, Inc.

Queen's University at Kingston

REDgen, Inc.

Refua, LLC*

Relief International

Repairers of the Breach, Inc.

Risen Savior Evangelical
Lutheran Church, Inc.

Riveredget Nature Center, Inc.

Riverwest Artists Association, Inc.

Riverworks Development
Corporation

Rocketship Education
Wisconsin, Inc.

Romea, o. p. s.



Ruach, Inc.	Spring Valley Seniors Staying Put, Inc.	The Gathering of Southeast Wisconsin, Inc.	The Waldorf School Association of the Delaware River Valley
Safe & Sound, Inc.	St. Ann Center for Intergenerational Care, Inc.	The Guest House of Milwaukee, Inc.	The Young Men's Christian Association of Metropolitan Milwaukee, Inc.
Safe Families for Children Alliance	St. Anne's University Hospital Brno	The House of Kings and Priests, Inc.	Three Harbors Council, Inc., Boy Scouts of America
Saint Francis Children's Center, Inc.	St. Joan Antida High School, Inc.	The Israel Center for Educational Innovation (a.r.)	TimeSlips Creative Storytelling, Inc.
SaintA, Inc.	St. Marcus Evangelical Lutheran Church, Inc.	The Israeli Opera - Tel Aviv - Yafo (a.r.)	Tishreen for the Advancement of Culture in Taybeh (a.r.)
Sanad Association - Mentoring and Volunteering (a.r.)	St. Monica's Senior Living	The Jerusalem Foundation (a.r.)	Torah Academy of Milwaukee for Girls, Inc.
Saukville Community Food Pantry, Inc.	St. Vincent De Paul Society of Milwaukee	The Lotus School of Liberal Arts	TovanoT Behinuch (a.r.)
SecureFutures Foundation, Inc.	Studio K Flamenco, Inc.	The Middle Ground, Inc.	Trans Center for Youth, Inc.
Senior Companion Program, Inc.	Tamar - Interdisciplinary Center (a.r.)	The Milwaukee Chevra Kadisha, Inc.	Trellis for Tomorrow
Serenity Inns, Inc.	Tapuach - Association for Advancement of the Information Age (a.r.)	The Milwaukee Jewish Federation, Inc.	Tricklebee Cafe, Inc.
Shaharit - Creating a Common Denominator (a.r.)	TBEY Arts Center, Inc.	The National Library of Israel, Ltd. (CC)	TRUE Skool, Inc.
Shalem Healing, Inc.**	Teachers Live	The OccuPaws Guide Dog Association	Tuke.TV, z.s.
Sharp Literacy, Inc.	Tech Careers (a.r.)	The Parenting Network, Inc.	United Methodist Children's Services of Wisconsin, Inc.
Shutaf - For Advancement and Integration of Children with Special needs in the Community (a.r.)	Teens Grow Greens, Inc.	The Pastime Club, Inc.	United Performing Arts Fund, Inc.
Siena Retreat Center, Inc.	The Arc Fond du Lac	The Poetry Center of Chicago	United Way of Greater Milwaukee & Waukesha County, Inc.
Sikkuy - The Association for the Advancement of Civil Equality (a.r.)	The Best Camp, Inc.	The Professional Dimensions Charitable Fund, Inc.	Unity in Motion, Inc.
Silver Spring Neighborhood Center, Inc.	The Cathedral Center, Inc.	The Province of St. Joseph of the Capuchin Order, Inc.	Unity Limited Partnership
Sinsinawa Dominicans	The Community Warehouse, Inc.	The Running Rebels Community Organization, Inc.	University of Nebraska Foundation
Sixteenth Street Community Health Centers, Inc.	The Education, Culture, and Neighborhood Renewal Company in Tel Aviv founded by the Jewish Agency of Israel (PBC)	The Season of Culture in Jerusalem (a.r.)	University of Wisconsin Foundation
Slovo 21, z. s.	The Friendship Circle, Inc.	The Threshold, Inc.	Upstream Arts, Inc.
Sojourner Foundation, Inc.	The Galilee Society: The Arab National Society For Health Research and Services (a.r.)	The UWM Foundation, Inc.	Urban Ecology Center, Inc.
		The Van Leer Jerusalem Institute	Urban Economic Development Association of Wisconsin, Inc.
			Urban Manufacturing Alliance

***Program Related Investment(s) & Grant(s)*

Variety - The Children's Charity of Wisconsin, Inc.

Vernon Economic Development Association, Inc.

Vessels of God, Inc.

Via Foundation

Village Way - Yemin Orde Educational Initiatives (a.r.)

Volunteer Center Of Racine County, Inc.

Volunteer Center of Washington County, Inc.**

Washington Island Community Health Program, Inc.

Westcare Wisconsin, Inc.

Western Dairyland Economic Opportunity Council, Inc.

Wild Space, Inc.

Wis Hope, Inc.

Wisconsin, Inc.

Wisconsin Black Historical Society and Museum, Inc.

Wisconsin Center For Nursing, Inc.

Wisconsin Coalition Against Homelessness, Inc.

Wisconsin Conservatory of Music, Inc.

Wisconsin Educational Youth Development Foundation, Inc.

Wisconsin Humane Society, Inc.

Wisconsin Inmate Education Association, Inc.

Wisconsin Institute for Healthy Aging, Inc.

Wisconsin Lutheran Child & Family Service, Inc.

Wisconsin Parkinson Association, Inc.

Wisconsin Philanthropy Network, Inc.

Wisconsin Policy Forum, Inc.

Wisconsin Public Broadcasting Foundation, Inc.

Wisconsin Regional Training Partnership, Inc.

Wisconsin Veterans Network, Inc.

Wisconsin Women's Business Initiative Corporation

Wiscraft, Inc.

Woodland Pattern, Inc.

Writing Services

Xalaat Africa Drum and Dance for Life, Ltd.

Yehuda Tribitch Memorial Fund for Social Involvement (a.r.)

Yeshiva Elementary School-Milwaukee, Inc.

Young Mens Christian Association of the Fox Cities, Inc.

Youth Frontiers, Inc.

Youth Leading Change (a.r.)

Yozmot Atid (a.r.)

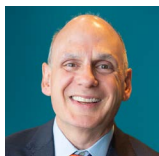
Yuval Susan Fund (a.r.)

Zefat Academic College



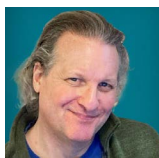
OUR IMPACT

BADER PHILANTHROPIES BOARD & STAFF



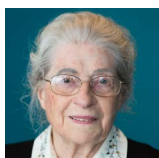
DANIEL J. BADER

President/CEO, Board of Directors
Advisory Committee Member:
Helen Daniels Bader Fund
Isabel & Alfred Bader Fund



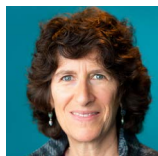
DAVID M. BADER

Vice President, Board of Directors
Advisory Committee Member:
Helen Daniels Bader Fund
Isabel & Alfred Bader Fund



ISABEL BADER

Advisor
Advisory Committee Member:
Isabel & Alfred Bader Fund



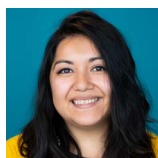
LINDA C. BADER

Board of Directors
Advisory Committee Member:
Helen Daniels Bader Fund
Isabel & Alfred Bader Fund



MICHELLE BERRONG BADER

Board of Directors
Advisory Committee Member:
Helen Daniels Bader Fund
Isabel & Alfred Bader Fund



SANDRA BEDNARZ

Event & Logistics Coordinator



DEIRDRE H. BRITT

Secretary, Board of Directors
Advisory Committee Chair:
Helen Daniels Bader Fund



BEN L. CALLIF

Research & Mindset Director



FRANK E. CUMBERBATCH

Vice President - Engagement



MARGARET FOSTER

Board of Directors
Advisory Committee Chair:
Isabel & Alfred Bader Fund



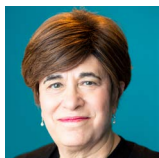
MERILOU V. GONZALES

Communications Coordinator



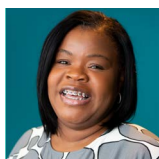
BRIDGETT GONZALEZ

Program Officer



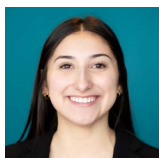
LISA G. HILLER

Vice President - Administration



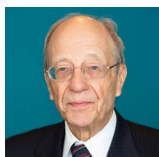
TAMARA LYNETTE HOGANS

Community Engagement Officer



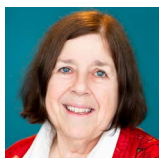
CLAUDIA MARTINEZ

Program Associate



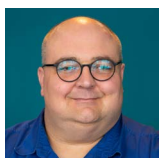
JERE D. MCGAFFEY

Chair/Treasurer, Board of Directors
Advisory Committee Member:
Helen Daniels Bader Fund
Isabel & Alfred Bader Fund



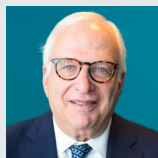
HELEN RAMON

Senior Program Officer



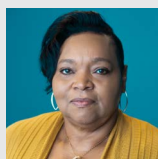
BRIAN REPINSKI

Information Technology
& Systems Director



JEFFREY ROSEN

Program Officer



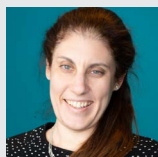
LINDA K. RUCKER

Financial Administrator



DENA SAFER

Israel Logistics Coordinator



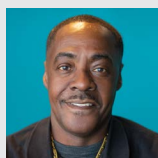
ADINA SHAPIRO

Board of Directors
Advisory Committee Member:
Isabel & Alfred Bader Fund



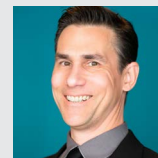
KIM THAO

Operations Director



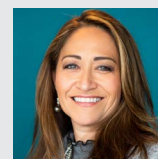
FRANKIE THOMAS

Safety Coordinator



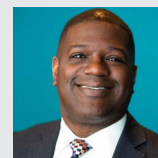
ROBERT TOBON

Program Officer



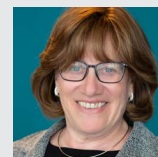
MARIA LOPEZ VENTO

Vice President - Grants
& Impact Investments



BRANDON WIGLEY

Program Officer



FRANCES KLITSNER WOLFF

Board of Directors
Advisory Committee Member:
Helen Daniels Bader Fund

INTERNS

LEIGH BOJAN

Office Assistant Intern

MARTHA GHEBREGZIABIHER

Office Assistant Intern

JACINDA LUANGKHOT

Program Administrative Intern

ESTIE MEISTER

Office Assistant Intern

AUDREY ROTH

Social Media &
Communications Intern

ISABELLE SHAVLIK

Social Media &
Communications Intern

DIAMOND SPIKES

Program Administrative Intern

NECHAMA STEIN

Office Assistant Intern

HANNAH TIERNEY

Social Media &
Communications Intern

HALEY VELEZ

Social Media &
Communications Intern



All labor that uplifts humanity
has dignity and importance
and should be taken with
painstaking excellence.

- Dr. Martin Luther King Jr.

BADER PHILANTHROPIES, INC.

3300 N. Dr. Martin Luther King, Jr. Drive | Milwaukee, WI 53212

414-224-6464 | www.bader.org

Photo Credits: Bader Hillel Academy, Bader Hillel High, Feeding America Eastern Wisconsin, Grace Lennon Photography, Lila Aryan Photography, Milwaukee Jewish Day School, Salam Qasem, Queen's University, Pat Roberson, Torah Academy of Milwaukee, Vogue Dreams Pro, Wisconsin Institute for Torah Study, and Yeshiva Elementary School