



2022 IMPACT REPORT

PRESENCE PROGRESS & 30 YEARS OF SHARED IMPACT





“

**REMEMBER TO
CELEBRATE
MILESTONES AS
YOU PREPARE FOR
THE ROAD AHEAD.**

- NELSON MANDELA

Former President of South Africa



CELEBRATING 30 YEARS OF PROGRESS

A MESSAGE FROM OUR PRESIDENT / CEO

In our first annual report, I offered a reflection that rings true today. Making change happen is a complicated business. My brother, David and I started the Helen Bader Foundation to honor our mother's memory; and to extend her legacy of philanthropy. We started with her passions—Alzheimer's Disease and Dementia, Families and Children, Jewish Philanthropy, Milwaukee Jewish Education, and added Legacy to enable us to support organizations such as Legal Aid Society, the Wisconsin Conservatory of Music and her alma mater, University of Wisconsin-Milwaukee.

Bader Philanthropies reached a milestone—30 years of ***shared impact*** which reflects the passions and interests of three people—my mother, Helen; and my father, Alfred and his wife, Isabel. Over three decades, partners located in Milwaukee, rural Wisconsin, Canada, Czech Republic,

Israel, and other countries are “***Spreading Hope. Creating Opportunities.***”

Your compassion and kindness are embedded in how you execute your programs and offer your services. You are helping older adults remain active and recall fond memories; encouraging youth to explore the outdoors and develop their leadership skills; supporting people in bringing dreams to life and creating communities where creativity can thrive. We hope the pages that follow give you an opportunity to pause, reflect and honor the magnitude of presence, the progress and the shared impact of our work together.

Best wishes,

A handwritten signature in black ink, appearing to read 'D. J. Bader'.

Daniel J. Bader

BADER

PHILANTHROPIES, INC.

30 YEAR RETROSPEC



1992

Daniel and David Bader launch the Helen Bader Foundation to honor the compassionate spirit of their mother.

1993

The Foundation expands its grantmaking funding to include Education.

The Helen Bader Center at the Jewish Home and Care Center (now Ovation) opens to provide advanced dementia care to residents in a home-like setting.

1996

The Foundation awards its first grant in the Economic Development program area.

1998

The first round of grants awarded in the Sankofa Youth Development program area.

The Foundation narrows its focus in the Israel program area to children with developmental disabilities, ages 0-7.

TIVE



2000

The Foundation introduces an online grant application.

2001

A 10th anniversary gift of \$5 million awarded to University of Wisconsin-Milwaukee to recognize Helen's commitment to older adults. The Helen Bader School of Social Welfare is named.

2004

Homework First program celebrates 5 years of helping Milwaukee Public School students learn academic discipline and good study habits.

2007

The Foundation allocates an equity investment of \$5 million to Generations Growth Capital to spur economic growth among businesses serving low-and moderate-income communities in the midwest.

2009

The Foundation commits \$10 million to create a permanent endowment for the Helen Bader Scholarship Fund for Jewish Education.





30 YEAR RETROSPECTIVE (CONT.)



2014

The Helen Bader Foundation total giving surpasses \$250 million.

2015

Bader Philanthropies, Inc. is created to deepen and expand its philanthropic investments in Milwaukee, Wisconsin and around the world through the generosity of the Isabel & Alfred Bader Fund and the Helen Daniels Bader Fund.

2017

Bader Philanthropies breaks ground on its global headquarters at the intersection of Dr. Martin Luther King, Jr. Drive and Concordia, across the street from Dr. Martin Luther King, Jr. Elementary.

The Foundation moves into its new global headquarters in July 2018.

2019

The Foundation makes its largest grant award - \$40 million - to Queen's University to revitalize and expand the Agnes Etherington Art Centre and create a new home for the Bader Collection.



...AND ONWARD



2020

The Foundation awards \$2.3 million to organizations during the initial COVID-19 outbreak.

Bader Philanthropies completes construction on the building adjacent to its global headquarters to fulfill the neighborhood's requests for a restaurant—Sam's Place, a jazz eatery; and health care facility—Shalem Healing in Harambee.

2021

The Milwaukee Jewish Federation (MJF) begins distributions from the Helen Daniels Bader Jewish Education Fund, their largest permanent endowment fund with current assets over \$13 million.

2022

Bader Philanthropies formally names the building across the street, the Harpole Building, in honor of Reuben and Mildred Harpole, long-time community leaders.

Bader Philanthropies exceeds \$425 million in grants awarded.



SAFE
COMMUNITY
NAVIGATOR

2nd Annual
**HEALTH FAIR &
VACCINATION CLINIC**



Putting Together For A Better Quality of Life

2nd Annual
**HEALTH FAIR &
VACCINATION CLINIC**



Putting Together For A Better Quality of Life

OUR PROGRAMS



**IN THE LONG RUN,
THE SHARPEST
WEAPON OF ALL
IS A KIND AND
GENTLE SPIRIT.**

- ANNE FRANK

The Diary of a Young Girl



 CYCLING
WITHOUT
AGE
CROSS PLAINS

CHAT

ALZHEIMER'S & HEALTHY AGING

TOTAL GRANTS

60

TOTAL DOLLARS

\$1,635,050

GRANTEE HIGHLIGHT:

NORTHWEST DANE SENIOR SERVICES

CYCLING WITHOUT AGE

Northwest Dane Senior Services, Inc. provides programs and services to older adults and their families in the rural communities of Northwest Dane County, including Black Earth, Cross Plains, Mazomanie, Roxbury, Vermont, and Berry, Wisconsin.

The organization launched Cycling without Age with a purchase of a trishaw named "Danny" in honor of Helen Daniels Bader. Volunteer pilots take older adults on rides around Cross Plains, Wisconsin which often spark conversations of fond memories and offers caregivers time for respite.

\$1,325,650

Independence, Wellness,
and Risk-Reduction

\$172,400

Education/Training for
Caregivers, Professionals,
and Students

\$137,000

Technology and
Applied Research for
Program Development

PROGRAM GRANTS





ALZHEIMER'S - ISRAEL

TOTAL GRANTS

8

TOTAL DOLLARS

\$877,500

GRANTEE HIGHLIGHT:

ISRAEL ELWYN

Israel Elwyn serves people of all ages who have intellectual and developmental disabilities (IDD), most of whom live in community settings supported by work, day programming, and other services. As the participants age into mid-life, they have a higher incidence of cognitive decline and dementia. Elwyn has launched a pilot program of comprehensive interventions to better manage cognitive needs.

\$660,000

Applied Research

\$210,000

Health & Social Services

\$7,500

Public Awareness

PROGRAM
GRANTS





SOCIAL EQUALITY

TOTAL GRANTS

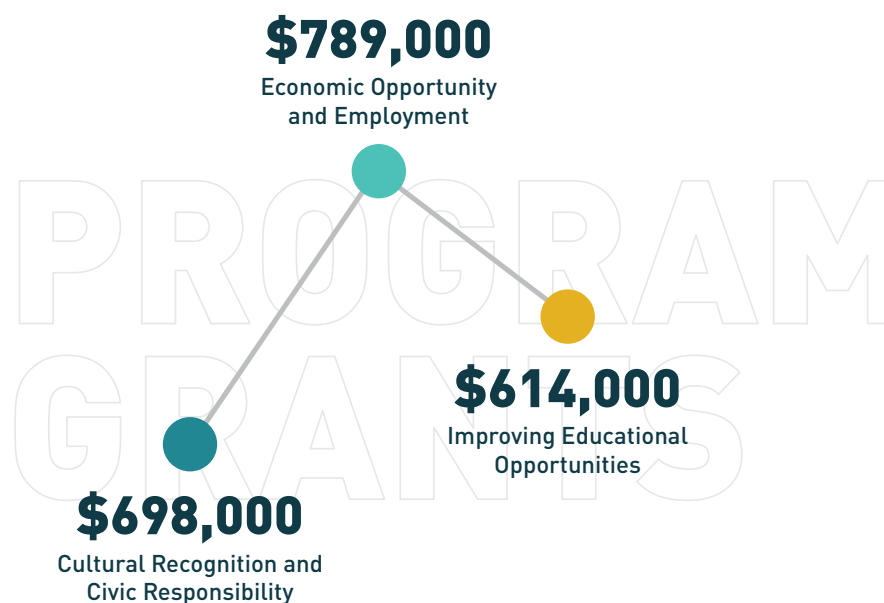
42

TOTAL DOLLARS

\$2,101,000

GRANTEE HIGHLIGHT: LISSAN

Lissan is a volunteer-driven initiative created by Hebrew University students providing affordable, accessible Hebrew instruction for low-income East Jerusalem women, helping them navigate the city's public space more confidently. The Medabrot Ivrit program ("women speaking Hebrew") has been a stepping stone for women, offering multiple levels of Hebrew at a very modest cost.







EMPLOYMENT

TOTAL GRANTS

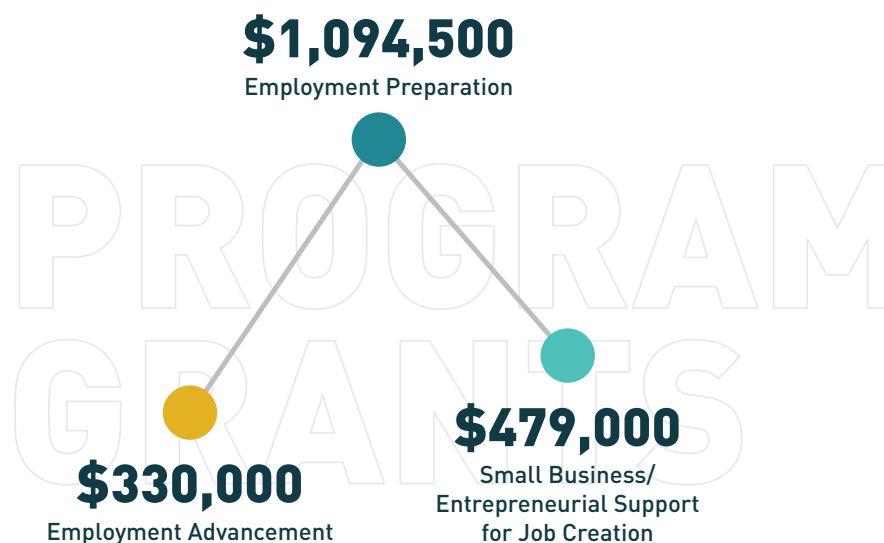
47

TOTAL DOLLARS

\$1,903,500

GRANTEE HIGHLIGHT: WISCONSIN WOMEN'S BUSINESS INITIATIVE CORPORATION

The Wisconsin Women's Business Initiative Corporation is a leading innovative statewide economic development corporation that is "Putting Dreams to Work." The organization opens doors to opportunity for individuals who are interested in starting, strengthening or expanding a business by providing access to resources and tools such as quality financial and business education, financial coaching and mentoring.







PROGRAM RELATED INVESTMENTS (PRIs)

TOTAL PRIs**2****TOTAL DOLLARS****\$166,000****GRANTEE HIGHLIGHT:****HIR WELLNESS, INC.**

Healing Intergenerational Roots (HIR) Wellness Institute and Center provides free services such as community wellness programming and clinical and occupational therapy services. The organization believes in a multi-systemic, intergenerational and integrated approach in providing holistic and high-quality mental health and wellness care to Indigenous and underserved community members.





THE ARTS

TOTAL GRANTS

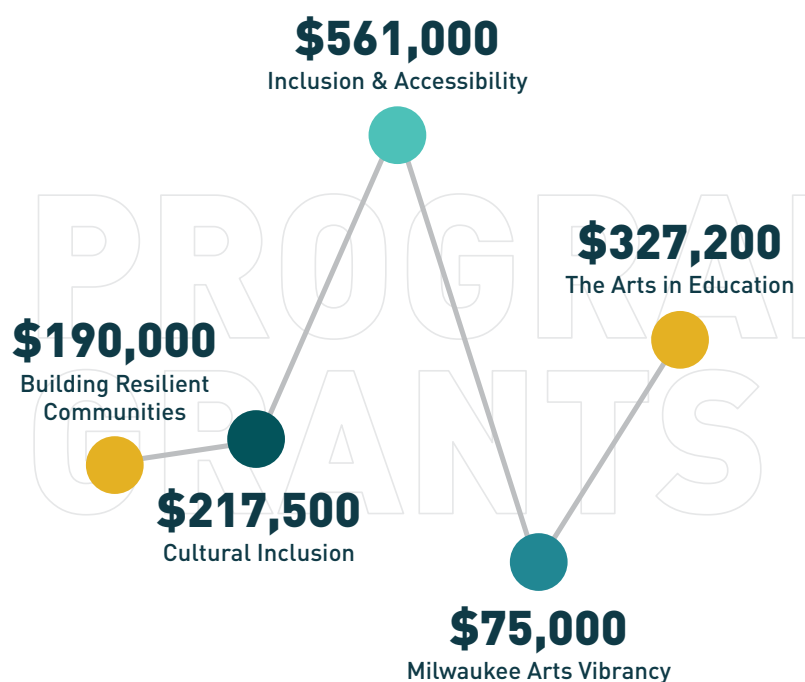
53

TOTAL DOLLARS

\$1,370,700

GRANTEE HIGHLIGHT: ARTS @ LARGE

Arts@Large promotes equal access for all ages to educational opportunities that include the arts, resulting in arts-rich, lifelong learning. The organization strives to integrate the arts across all content areas which transforms the way teachers teach and students learn.





JEWISH EDUCATION

TOTAL GRANTS

12

TOTAL DOLLARS

\$402,300

GRANTEE HIGHLIGHT: JEWISH BEGINNINGS LUBAVITCH PRESCHOOL

Jewish Beginnings Lubavitch Preschool recognizes that children who get a jumpstart toward reading before they enter kindergarten and 1st grade are more likely to be successful early readers. Early literacy programs establish skills and experiences that enable children to learn to write. Jewish Beginnings Lubavitch Preschool is also re-imagining its classroom footprint and converting spaces to make a Judaic education available to as many students as possible.

\$282,500

Jewish Education

\$119,800

Student
Excellence





URBAN EDUCATION

TOTAL GRANTS

26

TOTAL DOLLARS

\$2,299,740

GRANTEE HIGHLIGHT:

CLARA MOHAMMED SCHOOL

Clara Mohammed School, Inc. is a K-12 private choice school in the Harambee neighborhood focusing on the spiritual, intellectual, physical, and social health of children and families. With a considerable number of student families from Somalia, the school offers English language lessons for non-English speaking parents. Classes are held on weekdays with bimonthly Saturday classes. Financial and nutritional instruction is included in the Saturday sessions.

\$1,555,000

Multi-Disciplinary &
Experiential Education

\$186,240

Family Involvement &
School Culture

\$558,500

Public School Support





YOUTH DEVELOPMENT

TOTAL GRANTS

73

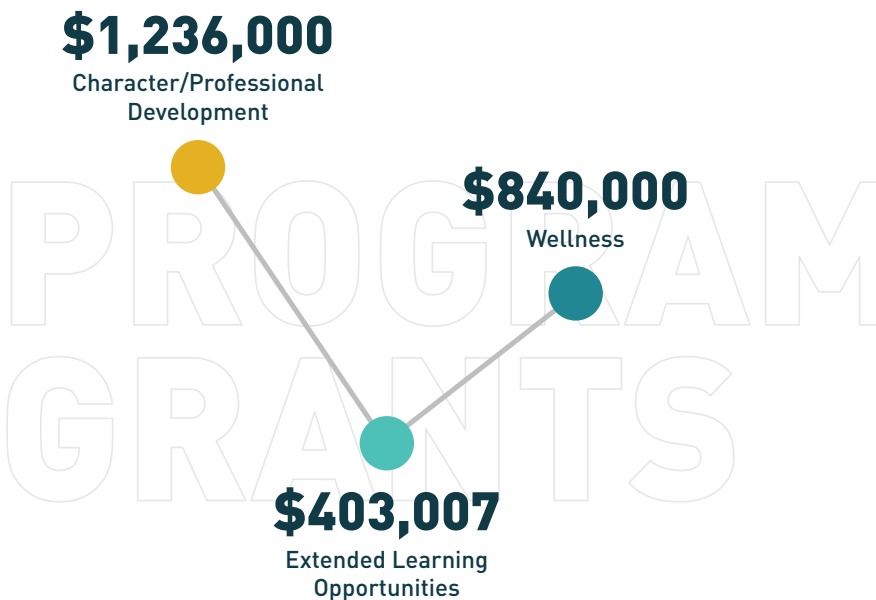
TOTAL DOLLARS

\$2,479,007

GRANTEE HIGHLIGHT:

TEENS GROW GREENS

Teens Grow Greens Inc. develops teens through transformative experiences that cultivate belonging, skill building and connections to opportunities that bring out their natural leadership gifts.





THE
ABILITY
CENTER



LEGACY

TOTAL GRANTS

122

TOTAL DOLLARS

\$10,762,457

GRANTEE HIGHLIGHT:

A.F.A.R (THE ABILITY CENTER)

The Ability Center’s driving purpose is to provide a higher quality of life for people of all abilities by transforming greater Milwaukee into the most universally inclusive recreation destination in the world.

\$9,407,000

Family Legacy

\$713,897

Al-Mubadarah Initiative

\$641,560

Pirkei Avi Initiative

PROGRAM
GRANTS





COMMUNITY MATTERS

TOTAL GRANTS

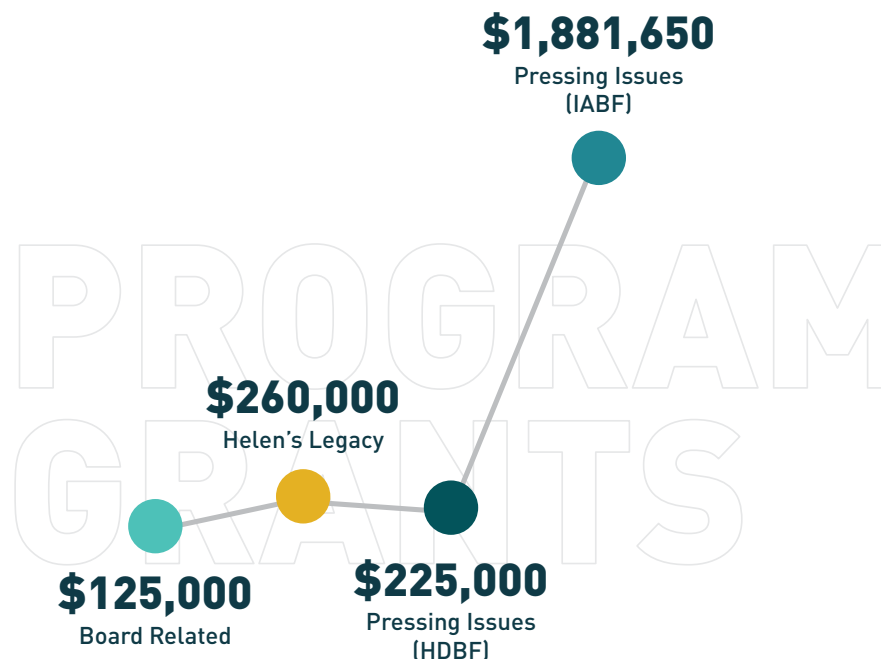
71

TOTAL DOLLARS

\$2,491,650

GRANTEE HIGHLIGHT:
**BRAVEHEARTS
THERAPEUTIC RIDING
AND EDUCATIONAL
CENTER**

BraveHearts Therapeutic Riding and Educational Center uses therapeutic riding to help veterans and older adults heal from physical ailments and embrace occupational, speech, and mental health challenges.







NEIGHBORHOOD ENGAGEMENT

TOTAL GRANTS

12

TOTAL DOLLARS

\$682,500

GRANTEE HIGHLIGHT:

ERAS SENIOR NETWORK

ERAS Senior Network, Inc. (ERAS) supports and engages seniors, adults with disabilities, and family caregivers in leading meaningful lives. In partnership with Milwaukee area organizations, ERAS organizes events such as the summer health fair and holiday gatherings to bring resources to the Harambee neighborhood. Activities promote healthy living through diagnostic testing, sharing the power of music for healthy aging and teaching people of all ages how to safely ride bicycles.







CROSS-SECTOR

TOTAL GRANTS

13

TOTAL DOLLARS

\$598,023

GRANTEE HIGHLIGHT:

THE PROVINCE OF ST. JOSEPH OF THE CAPUCHIN ORDER

The Province of St. Joseph of the Capuchin Order and the St. Francis of Assisi Parish is located on the central city borders of Halyard Park, Brewer's Hill and the Harambee neighborhoods. St. Francis serves Black, White, Latinx and LGBTQ members. The Parish Center is a gathering place bringing people of different cultures together and home base for community resources such as free tax return preparation services for low income neighbors; a safe place where recently released young men from prison can focus on their spiritual and emotional growth through counseling and regular meetings for people seeking a life of sobriety. In addition, the Capuchin Order runs a ministry and meal program for individuals and families in Milwaukee's downtown, West and North side areas, including individuals who may be homeless.





EVENTS FOR THE COMMUNITY

EVENT HIGHLIGHT: BADER BBQ

Neighbors gathered to celebrate holidays such as Mardi Gras, Mothers and Father's Day, Juneteenth Day, Back to School, Thanksgiving and Christmas. At this year's Bader BBQ, Harambee neighbors and partners enjoyed food, laughter, dance and musical performances, and the addition of children's activities, including sidewalk chalk art and a photobooth.



**THE GREATNESS OF A
COMMUNITY IS MOST
ACCURATELY MEASURED
BY THE COMPASSIONATE
ACTIONS OF ITS MEMBERS.**

- CORETTA SCOTT KING

American author, activist, civil rights leader



SHARED IMPACT



**FOCUS ON
THE POSITIVE
AND YOU WILL
FLOURISH.**

- ALEK WEK

Model and Designer



2022 CONVENINGS

EVENTS**87****ATTENDEES****1,917****ORGANIZATIONS****34**

This year community organizations re-convened in person, and also made virtual options readily available to ensure as many people as possible could be engaged in meaningful discussions regardless of geography.



CONVENINGS

PARTICIPANTS

414 LIFE

African American Leadership Alliance MKE

Bader Hillel Academy

BizStarts Milwaukee, Inc.

Black Health Coalition of Wisconsin

City of Milwaukee

City on A Hill, Inc.

Cristo Rey Jesuit High School Milwaukee, Inc.

Helen Bader Institute for Nonprofit Management

Helen Bader Institute for Social Welfare

Hispanic Professionals of Greater Milwaukee

Imagine MKE, Inc.

Jewish Community Relations Council

MENTOR Greater Milwaukee, Inc.

Milwaukee Bucks

Milwaukee Habitat for Humanity

Milwaukee Jewish Federation

Milwaukee Public Schools Foundation, Inc.

Nonprofit Management Fund

North Central Service Club, Inc.

OneHope27

Riverworks Development Corporation

Rotary Club of Milwaukee, Inc.

Sargento

Serenity Inns, Inc.

Skyrocket Education, Inc.

The Opportunity Center

The Olga Lengyel Institute for Holocaust Studies and Human Rights

Unity in Motion, Inc.

University of Wisconsin - Milwaukee

WestCare Wisconsin, Inc.

Wisconsin Faith Voices for Justice

Wisconsin Women's Business Initiative Corporation

Yeshiva Elementary School-Milwaukee, Inc.

IMPACT SNAPSHOT

In the 2022 FY, 427 grantees served an estimated...



269,151

Individuals



98,205

Students



77,723

Youths



9,844

Older Adults



234,341

Attendees at 449
events (virtual and
in-person)



180,000+

Healthy meals
provided



3,686

Individuals were
paired up with
mentors

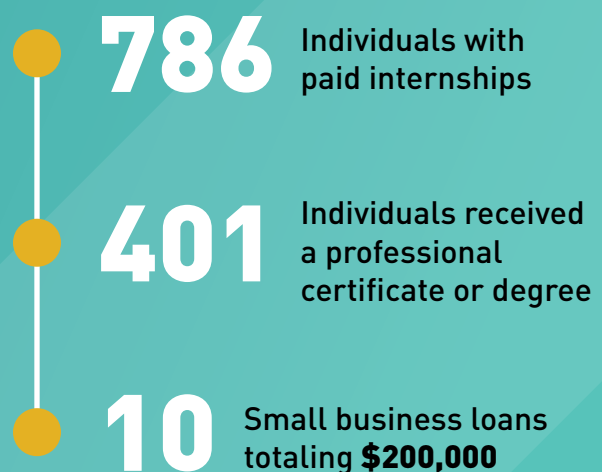
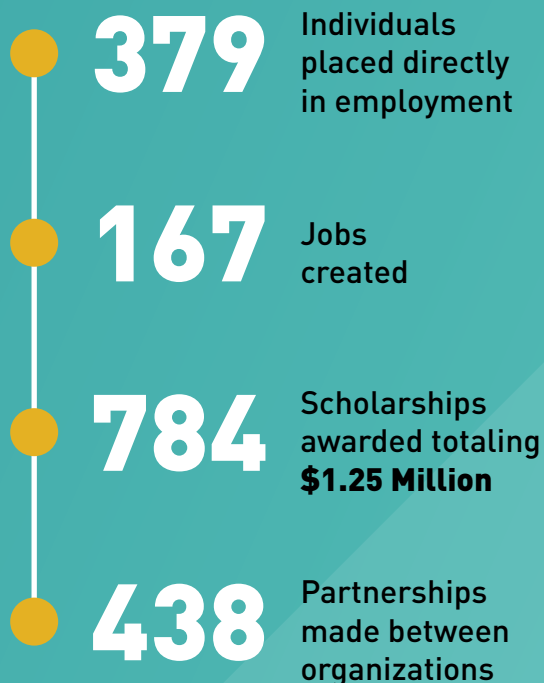


1,511

Older adults were
able to stay in their
own homes

**We gave \$8.47 million
in unrestricted funds
through 38 grants**

**Our dollars were leveraged
to raise \$2.86 million from
other donors**



DISTRIBUTED FUNDS

Awarding grants is what we do, and compassion is why we do it. Whether it's funding arts programs that bridge the gap between kids and older adults, or helping people gain skills to attain jobs to raise families, our work helps make life better for people in the communities we serve. Simply put, we connect people with people who can help because that's the only way real change happens.



APPROVED FUNDING BY PROGRAM AREA



A person in a wheelchair is shown from the side, moving across a paved surface. The background is a warm, golden sunset with long shadows. The image is overlaid with a diagonal gold band.

GRANTS & PRIS

2022 GRANTS & PRIS AWARDED

SEPTEMBER 1, 2021 THROUGH AUGUST 31, 2022

“

**THE GREATEST
GOOD IS WHAT
WE DO FOR ONE
ANOTHER.**

- MOTHER TERESA

Nobel Peace Prize Winner

1000 Generations, Inc.	Authorized Training Center of Prof. R. Feuerstein Methods, z.u.	Carmelite Sisters of the Divine Heart of Jesus, Inc.
4th Dimension Sobriety, Inc.	AVERROMA (z.s.)	Casa Romero Renewal Center, Inc.
50 50 Startups, Inc.	Bay View Community Center of Milwaukee, Inc.	Center For Veterans Issues Ltd.
A.F.A.R., Inc.	Bellin College, Inc.	Central Europe Center For Research & Documentation, Inc.
Above the Clouds, Inc.	Bembé Drum and Dance, Inc.	Centro Legal Por Derechos Humanos, Inc.
Acco Theatre Center (a.r.)	Best Buddies International, Inc.	Cesta von o.z.
ACTS Community Development Corporation	Bethesda Lutheran Communities, Inc.	Chabad Lubavitch of Doylestown, Inc.
Adult Learning Center, Inc.	Betty Brinn Children's Museum, Inc.	Charles Allis and Villa Terrace Museums, Inc.
African American Breastfeeding Network, Inc.	Beyond Vision, Inc.	Children's Crisis Treatment Center, Inc.
Age Well Arrowhead, Inc.	Big Brothers and Big Sisters of Metropolitan Milwaukee, Inc.	Children's Dyslexia Centers, Inc.
AgeBetter, Inc.	BizStarts Milwaukee, Inc.	Children's Hospital of Wisconsin Foundation, Inc.
Agrace Hospicecare Foundation, Inc.	Black Arts MKE, Inc.	City of Milwaukee
Alhaneen Nazareth (a.r.)	Board of Regents of the University of Wisconsin System, Inc.	City On A Hill, Inc.
Alianza Latina Aplicando Soluciones, Inc.	Board of Regents of the University of Wisconsin System, Inc. - UW-Superior	City Year, Inc.
All 4 Kidz, Inc.	Brain Center Of Green Bay, Inc.	Civic Leadership (a.r.)
All Hands Boatworks, Inc.	BraveHearts Therapeutic Riding and Educational Center, Inc.	Clara Mohammed School, Inc.
All-In Milwaukee, Inc.	Broadscope Disability Services, Inc.	COA Youth and Family Centers, Inc.
Alzheimer's Disease and Related Disorders Association, Inc. - Wisconsin Chapter	Burleigh Street Community Development Corporation, Inc.	College Possible
Amanina (a.r.)		Colliers Training Institute, Inc.
American Chemical Society, Inc.		Community Advocates, Inc.
Amery Area Senior Citizens, Inc.		
AMIT Children, Inc.		
ARA ART, z.s.		
Arms For All, Inc.		
Arous Elbahar Association for Women in Jaffa (RA)		
Art Start, Inc.		
ARTS for ALL Wisconsin, Inc.		
ArtWorks For Milwaukee, Inc.		
Ascension Wisconsin Foundation, Inc.		



GRANT HIGHLIGHT: BEST BUDDIES INTERNATIONAL

"Since joining Best Buddies, I have been enjoying my time hanging out with my Buddy and trying new activities that I have not done before."

— Grace of Best Buddies International

GRANTS & PRIS (CONT.)

Community Center for Immigrants, Inc.

Community Clothes Closet, Inc.

Concordia University

Congregation Beth Jehudah, Inc.

Congregation of St. John's Cathedral, Inc.

CORE/El Centro, Inc.

Council For Relationships, Inc.

Cream Skills, Inc.

Cristo Rey Jesuit High School Milwaukee, Inc.

Cross Evangelical Lutheran Church, Inc.

Curtain Call - Theater, Community, Society (R.A.)

Cyril Mooney Education, z.s.

Danceworks, Inc.

Data You Can Use, Inc.

Dementia Innovations, Inc.

Dor-Tran, Inc.

Down Syndrome Association of Wisconsin, Inc.

Dr. Howard Fuller Collegiate Academy, Inc.

Dr. James Cameron Legacy Foundation, Inc.

Early Music Now, Inc.

Eastbrook Academy, Inc.

Eastside Senior Services, Inc.

eduRoma, Inc.

Eisenhower Center, Inc.

Elmbrook Senior Taxi, Inc.

ElSabar Association (a.r.)

Employ Milwaukee, Inc.

Ephesians Missionary Baptist Church, Inc.

Epilepsy Families Southeast Wisconsin, Inc.

ERAS Senior Network, Inc.

Eretz-Ir (a.r.)

ETP Slovakia - Center for Sustainable Development

Ezer Mizion (a.r.)

Faculty of Arts, Charles University

Faith in Action Washburn County UA, Inc.

Feast of Crispian, Inc.

Federation of Jewish Communities of Romania (FEDROM)

Feeding America Eastern Wisconsin, Inc.

Fellowship Open, Inc.

Feuerstein Institute (a.r.)

First Congregational United Church of Christ-River Falls, WI, Inc.

Florentine Opera Company, Inc.

Food, Faith and Farming Network, Inc.

FOR-M Foundation, Inc.

Foundation for Rural Housing, Inc.

Franciscan Peacemakers, Inc.

Friedens Community Ministries, Inc.

Friends of JCC Krakow, Inc.

Friends of Schlitz Audubon Nature Center, Inc.

Friends of the Rambam Medical Center (a.r.)

Friends of the Senior Activity Center of Sheboygan, Inc.

Friendship Circle Delaware Valley North, Inc.

Girl Scouts Of Wisconsin Southeast, Inc.

Girls on the Run of Southeastern Wisconsin, Inc.

Giving Voice Initiative, Inc.

God Touch Milwaukee, Inc.

Grand Avenue Club, Inc.

Grantmakers In Aging, Inc.

Growing Minds, Inc.

HAKEM (PSC)

Harry and Rose Samson Family Jewish Community Center, Inc.

Hasoub - Organization for Promoting Entrepreneurship and Technology in Arab Society (a.r.)

Hillel Academy, Inc.

HIR Wellness Institute, Inc.

Hispanic Professionals of Greater Milwaukee, Inc.

Historic King Drive Business Improvement District, Inc.

Hmong/American Friendship Association, Inc.

Hope Christian Schools, Inc.
 Hope House of Milwaukee, Inc.
 Hope Street Ministry, Inc.
 Housing Authority of the City of Milwaukee, Inc.
 Housing Resources, Inc.
 Hungarian Academy of Sciences (Magyar Tudományos Akadémia, MTA), Inc.
 I Am A Son, Inc.
 Imagine MKE, Inc.
 Impact Alcohol & Other Drug Abuse Services, Inc.
 Inner City Athletics, Inc.
 Inner-City-Computer Stars Foundation, Inc.
 Institute for Debt Prevention and Resolution, Inc.
 Institute for the Study of Totalitarian Regimes, Inc.
 Institute of Art History, the Czech Academy of Sciences, Inc.
 Institute of Contemporary History of the Czech Academy of Sciences
 Institute of Ethnology
 IQ Roma servis (z.s.)
 IsraAID US Global Humanitarian Assistance, Inc.
 Israeli Medical Association, Inc.
 Jacarrie Kicks For Kids, Inc.
 Jake's Diapers, Inc.
 Jako Doma - Homelike, o.p.s.
 Jazale's Art Studio, Inc.
 Jerusalem Inter-Cultural Center (a.r.)
 Jerusalem International YMCA (a.r.)
 Jerusalem Youth Chorus, Ltd. (CC)

Jewish Beginnings Lubavitch Preschool, Inc.
 Jewish Funders Network
 Jewish Heritage Foundation - Menorah, Inc.
 Jewish National Fund-Keren Kayemeth Lelsrael-, Inc.
 JFS Housing, Inc.
 Jindas - the Society for Urban Renewal in Lod (a.r.)
 JobsWork MKE, Inc.
 Johnson's Park Neighborhood Association, Inc.
 Joint Israel (PBC)

Lakeland University, Inc.
 Lao Community Center of Wisconsin, Inc.
 Lassid Ministries, Inc.
 Latino Arts, Inc.
 Layton Boulevard West Neighbors, Inc.
 Lead2Change, Inc.
 Leaders of the Future (a.r.)
 Legal Aid Society of Milwaukee, Inc.
 Life Changing Ministries, Inc.
 Life Navigators, Inc.



GRANT HIGHLIGHT:

MATI RA'ANANA (A.R.)

“The training [Entrepreneurship program for Arab women with disabilities] made me believe in myself and stand on my feet again, to live and enjoy life with dignity and strength.”

— Regda Issa

Journey House, Inc.
 Journey21, Inc.
 Joyce's House of Milwaukee, Inc.
 Junior Achievement of Wisconsin, Inc.
 Kenosha Unified School District - Harborside Academy, Inc.
 KHER, z.s.
 Kids from Wisconsin, Ltd.
 La Familia De Arte, Inc.
 Labor for Learning, Inc.

Life's Door - Coping with Illness and Loss, Ltd. (CC)
 Lifestridders, Inc.
 Lighthouse Youth Center, Inc.
 Lissan (a.r.)
 Literacy Lab, Inc.
 Literacy Services of Wisconsin, Inc.
 Living Our Visions, Inc.
 Local Initiatives Support Corporation
 Lotus Legal Clinic, Inc.

GRANTS & PRIS (CONT.)

Lubavitch of Wisconsin, Inc.

Lutheran Counseling and Family Services of Wisconsin, Inc.

Lutheran Social Services of Wisconsin and Upper Michigan, Inc.

Maccabi Healthcare Services

MacCanon Brown Homeless Sanctuary, Inc.

Malaika Early Learning Center, Inc.

Marcus Center for the Performing Arts, Inc.

Marquette University

Ma'ruf, Inc.

Masaryk University, Inc.

Mati Center for Fostering Initiatives and Business Development Center Jerusalem (a.r.)

MATI Ra'anana (a.r.)

MEET - Middle East Education Through Technology (a.r.)

Melabev-Community Center for Eldercare (a.r.)

Menomonee Valley Partners, Inc.

Menomonie Area Senior Center, Inc.

MENTOR Greater Milwaukee, Inc.

Mequon Jewish Preschool, Inc.

Messmer Catholic Schools, Inc.

Meta House, Inc.

Milwaukee Alliance for Jewish Reconnection, Inc.

Milwaukee Area Technical College Foundation, Inc.

Milwaukee Art Museum, Inc.

Milwaukee Ballet Company, Inc.

Milwaukee Bar Association Foundation, Inc.

Milwaukee Center for Independence, Inc.

Milwaukee Chamber Theatre, Ltd.

Milwaukee Christian Center, Inc.

Milwaukee Film, Inc.

Milwaukee Institute of Art & Design, Inc.

Milwaukee Jazz Institute, Inc.

Milwaukee Jewish Day School, Inc.

Milwaukee Jewish Free Loan Association, Inc.

Milwaukee Opera Theatre, Inc.

Milwaukee Public Museum, Inc.

Milwaukee Public Schools, Inc.

Milwaukee Public Schools Foundation, Inc.

Milwaukee Public Schools - Dr. Martin Luther King Jr. Elementary School, Inc.

Milwaukee Riverkeeper, Inc.

Milwaukee Simba S.C., Inc.

Milwaukee Tennis & Education Foundation, Inc.

Milwaukee Urban League, Inc.

Milwaukee Youth Symphony Orchestra, Inc.

Milwaukee Youth Theatre, Inc.

Mission Investors Exchange, Inc.

MobiliSE, Inc.

Mount Mary University, Inc.

Muslala Art-Trax (R.A.)

Muslim Community and Health Center of Wisconsin, Inc.

Mustang Bon Foundation, Inc.

My Way Out, Inc.

GRANT HIGHLIGHT: MILWAUKEE YOUTH SYMPHONY ORCHESTRA

"Leadership opportunities no longer intimidate me because I've never been thrown in the deep end all by myself at MYSO. I have discovered my obstacles can be facilitated through teamwork, discipline, a focused mindset, and empathy all around."

— Abby Hanna



NAMI Southeast Wisconsin, Inc.
 Nativity Jesuit Academy, Inc.
 Nature's Edge Therapy Center, Inc.
 Navrat, Inc.
 Near West Side Partners, Inc.
 Neenah Public Library, Inc.
 Neighborhood House of Milwaukee, Inc.
 Neu-Life Community Development, Inc.
 Next Act Theatre, Inc.
 Next Door Foundation, Inc.
 Next Right Thing Adventures, Inc.
 North Shore Montessori School, Inc.
 Northcott Neighborhood House, Inc.
 Northwest Dane Senior Services, Inc.
 Notre Dame School of Milwaukee, Inc.
 Ogen - Free Loan Fund (r.a.)
 OneHope27, Inc.
 Optimist Theatre, Inc.
 Organization for Aid to Refugees (OPU)
 Our Community, Ltd.
 Our Scholarship, Inc.
 Palestinian Internship Program, Inc.
 PAQ Research, z.u.
 Park Place, Adult Day Services, Inc.
 Pathfinders Milwaukee, Inc.
 PEARLS for Teen Girls, Inc.
 Penfield Montessori Academy, Inc.



GRANT HIGHLIGHT: NORTHCOTT NEIGHBORHOOD HOUSE, INC.

“Living a life with meaning and purpose is key to improving our world around us. Giving people purpose, can be as simple as volunteering, in order to help others.”

— Elizabeth M. Coggis

Physicians for Human Rights in Israel (a.r.)
 Playing for Peace (a.r.)
 Points of View from Jerusalem (R.A.)
 PRAMENÍ, o.p.s.
 PresenTense Israel, Ltd. (CC)
 Professional Fire Fighters of Wisconsin Charitable Foundation, Inc.
 Project R.E.T.U.R.N., Inc.
 Public Allies, Inc.
 Quasimondo, Inc.
 Queen's University at Kingston
 Rawhide, Inc.
 Reading & Math, Inc.
 Rebuilding Together-Fox Valley, Inc.
 Redeemer Lutheran Church, Inc.
 Relief International
 Renaissance Theaterworks, Inc.
 Repairers of the Breach, Inc.
 Retired Senior Volunteer Program of Rock County, Inc.
 Richland Center-Santa Teresa Sister City Project, Inc.

Risen Savior Evangelical Lutheran Church, Inc.
 River Revitalization Foundation, Inc.
 Riveredge Nature Center, Inc.
 Riverworks Development Corp.
 Rocketship Education Wisconsin, Inc.
 ROMEA, o.p.s.
 Romodrom o.p.s.
 Ruach Tzeira (a.r.)
 Ruach, Inc.
 Saint Francis Children's Center, Inc.
 Samad's House Corp.
 Sanad Association - Mentoring and Volunteering (a.r.)
 Sassu Enterprises Pet Therapy Services, Inc.
 Scaling Wellness in Milwaukee, Ltd.
 School Sisters of Notre Dame Central Pacific Province, Inc.
 SecureFutures Foundation, Inc.
 Seeds of Health, Inc.
 Senior Citizens Activities, Inc.
 Serenity Inns, Inc.

GRANTS & PRIS (CONT.)

GRANT HIGHLIGHT:

SHUTAF FOR ADVANCEMENT AND INTEGRATION OF CHILDREN WITH SPECIAL NEEDS IN THE COMMUNITY (A.R.)

“These moments and opportunities
literally shape his future.”

— Parent of Shutaf Camper



Shaharit - Creating a Common Denominator (a.r.)

Shalem Healing, Inc.

SHARP Literacy, Inc.

Shutaf - For Advancement and Integration of Children with Special needs in the Community (a.r.)

Sirona Recovery, Inc.

Skilled Volunteers for Israel, Inc.

Skylight Music Theatre Corp.

Skyrocket Education, Inc.

Slovo 21, z. s.

Sojourner Foundation, Inc.

Solomon Community Temple United Methodist Church, Inc.

Special Olympics Wisconsin, Inc.

Spisska Katolicka Charita, Inc.

Spring Valley Seniors Staying Put, Inc.

St. Ann Center for Intergenerational Care, Inc.

St. Anne's University Hospital Brno, Inc.

St. Joan Antida High School, Inc.

St. Marcus Evangelical Lutheran Church, Inc.

St. Philip Lutheran Church, Inc.

State of Wisconsin, Department of Justice, Inc.

STEM Forward, Inc.

Street Angels, Inc.

STRYV365, Inc.

Studio K Flamenco, Inc.

Studio of Her Own - Center for Creative Women Artists (a.r.)

Summit Educational Association, Inc.

Summit Players Theatre, Inc.

Tamar - Interdisciplinary Center (a.r.)

Tamarack Waldorf School, Inc.

Tarbut Movement (a.r.)

TBEY Arts Center, Inc.

TeamTeal365, Inc.

Tech Careers (a.r.)

TECH2PEACE (R.A.)

Teens Grow Greens, Inc.

The Best Camp, Inc.

The Cathedral Center, Inc.

The Center for Health Design, Inc.

The Community Warehouse, Inc.

The Devid Yellin Academic College of Education (a.r.)

The Follow Up Committee on Arab Education (a.r.)

The Friendship Circle, Inc.

The Gathering of Southeast Wisconsin, Inc.

The Guest House of Milwaukee, Inc.

The Israel Center for Educational Innovation (a.r.)

The Jerusalem Symphony Orchestra (r.a.)

The Medical College of Wisconsin, Inc.

The Middle Ground, Inc.

The Milwaukee Chevra Kadisha, Inc.

The Milwaukee Jewish Federation, Inc.

The Milwaukee Rescue Mission	Urban Economic Development Association of Wisconsin, Inc.	Wisconsin Community Services, Inc.
The Mooring Programs, Inc.	Veterans Multi-Service Center, Inc.	Wisconsin Conservatory of Music, Inc.
The OccuPaws Guide Dog Association	Via Foundation	Wisconsin Evangelical Lutheran Synod Kingdom Workers, Inc.
The Opportunity Center, Inc.	Villa St Francis, Inc.	Wisconsin Humane Society, Inc.
The Poetry Center of Chicago	Village Way - Yemin Orde Educational Initiatives (a.r.)	Wisconsin Inmate Education Association, Inc.
The Province of St. Joseph of the Capuchin Order, Inc.	Vision Forward Association, Inc.	Wisconsin Lutheran Child & Family Service, Inc.
The Running Rebels Community Organization, Inc.	Volunteer Center of East Central Wisconsin, Inc.	Wisconsin Policy Forum, Inc.
The Salvation Army - Milwaukee County, Inc.	Volunteer Center Of Racine County, Inc.	Wisconsin Public Broadcasting Foundation, Inc.
The Season of Culture in Jerusalem (a.r.)	Volunteer Center of Washington County, Inc.	Wisconsin Regional Training Partnership, Inc.
The Sheba Fund for Health Services and Research (a.r.)	WASCO, Inc.	Wisconsin Veterans Network, Inc.
The UWM Foundation, Inc.	Waukesha Civic Theatre, Inc.	Wisconsin Women's Business Initiative Corporation
The Waldorf School Association of the Delaware River Valley	Waukesha County Community Dental Clinic, Inc.	Word of Hope Ministries, Inc.
The Young Men's Christian Association of Metropolitan Milwaukee, Inc.	Waukesha County Food Pantry, Inc.	Yehuda Tribitch Memorial Fund for Social Involvement (a.r.)
Three Rivers United Temporary Housing, Inc.	Wellpoint Care Network, Inc.	Yeshiva Elementary School-Milwaukee, Inc.
Tishreen for the Advancement of Culture in Taybeh (a.r.)	Westcare Wisconsin, Inc.	Young Men's Christian Association of Dane County, Inc.
Torah Academy of Milwaukee for Girls, Inc.	Wild Space, Inc.	Youth Frontiers, Inc.
Trellis for Tomorrow, Inc.	Winter Shelter Haven MKE, Inc.	Yuval Susan Fund (a.r.)
TRUE Skool, Inc.	Wis Hope, Inc.	Zulat - for Equality and Human Rights (r.a.)
Tzad Iti (a.r.)	Wisconsin Adaptive Sports Association, Inc.	
United Community Center, Inc.	Wisconsin Coalition Against Homelessness, Inc.	
United Methodist Children's Services of Wisconsin, Inc.		
United Neighborhood Centers Of Milwaukee, Inc.		
United Way of Greater Milwaukee & Waukesha County, Inc.		
Unity in Motion, Inc.		
Urban Ecology Center, Inc.		



GRANT HIGHLIGHT:

SLOVO 21, z.s.

"Membership in the Paramisara Club gave to Romani authors a space for creativity."

— Martin Oláh

BADER PHILANTHROPIES

BOARD & STAFF



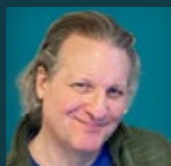
DANIEL J. BADER

President/CEO, Board of Directors
Advisory Committee Member:
Helen Daniels Bader Fund
Isabel & Alfred Bader Fund



FRANK E. CUMBERBATCH

Vice President - Engagement



DAVID M. BADER

Vice President, Board of Directors
Advisory Committee Member:
Helen Daniels Bader Fund
Isabel & Alfred Bader Fund



MARGARET FOSTER

Board of Directors
Advisory Committee Chair:
Isabel & Alfred Bader Fund



LINDA C. BADER

Board of Directors
Advisory Committee Member:
Helen Daniels Bader Fund
Isabel & Alfred Bader Fund



MERILOU V. GONZALES

Communications Director



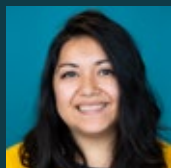
MICHELLE BERRONG BADER

Board of Directors
Advisory Committee Member:
Helen Daniels Bader Fund
Isabel & Alfred Bader Fund



BRIDGETT GONZALEZ

Program Officer



SANDRA BEDNARZ

Operations Director



LISA G. HILLER

Vice President - Administration



DEIRDRE H. BRITT

Secretary, Board of Directors
Advisory Committee Chair:
Helen Daniels Bader Fund



TAMARA LYNETTE HOGANS

Community Engagement Officer



BEN L. CALLIF

Vice President – Strategy & Culture

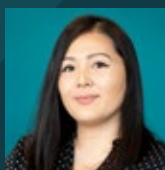


ANNABELLA LEE

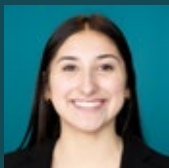
Operations Assistant



KRISTEN LIE
Grants Manager



KIM THAO
Enterprise Innovation Director



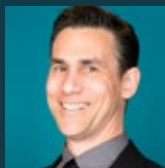
CLAUDIA MARTINEZ
Program Officer



FRANKIE THOMAS
Safety Coordinator



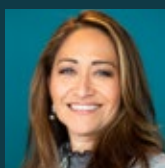
JERE D. MCGAFFEY
Chair/Treasurer, Board of Directors
Advisory Committee Member:
Helen Daniels Bader Fund
Isabel & Alfred Bader Fund



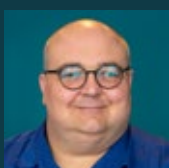
ROBERT TOBON
Program Officer



HELEN RAMON
Senior Program Officer



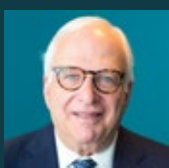
MARIA LOPEZ VENTO
Vice President - Grants



BRIAN REPINSKI
Information Technology
& Systems Director



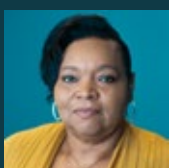
BRANDON WIGLEY
Program Officer



JEFFREY ROSEN
Program Officer



FRANCES KLITSNER WOLFF
Board of Directors
Advisory Committee Member:
Helen Daniels Bader Fund



LINDA K. RUCKER
Financial Administrator



DENA SAFER
Travel & Logistics Coordinator



ADINA SHAPIRO
Board of Directors
Advisory Committee Member:
Isabel & Alfred Bader Fund

INTERNS

GENAVIV ALCANTARA
Social Media/Communications Intern

LEXI PORRAS
Social Media/Communications Intern

KEYANNA BELL
Community Administrative Intern

TAYLOR ROBINSON
Social Media/Communications Intern

MARTHA GHEBREGZIABIHER
Office Assistant Intern

DASSI SALTZMAN
Office Assistant Intern

TOVA HANDLER
Office Assistant Intern

MADELINE TAPHORN
Social Media/Communications Intern

DAEJA HOLLINS
Program Administrative Intern

SOFIA WALZ-CHOJNACK
Office Assistant Intern

