



B A D E R

PHILANTHROPIES, INC.

Celebrating

COMPASSION

2024 IMPACT REPORT

**FIND THE GOOD. IT'S ALL
AROUND YOU. FIND IT,
SHOWCASE IT, AND YOU'LL
START BELIEVING IN IT.**

- JESSE OWENS

American Track and Field Athlete





Celebrating Compassion

A MESSAGE FROM OUR PRESIDENT / CEO

Bader Philanthropies stands in awe and celebrates the compassion that is spreading throughout the world.

Our community partners are meeting the needs of fellow human beings – young and old in Milwaukee, rural Wisconsin communities, Canada, the Czech Republic and Israel. Children are learning about history and experiencing the arts in person, individuals are making courageous decisions to overcome their substance-use addiction, families are enjoying the comforts of places they now call “home” and people of all ages perfect skills and gain knowledge to contribute to society. Your work behind

the scenes and on the front-lines can be challenging from time to time and unpredictable. But, we know you do so with joy and the spirit of making a difference.

It is a privilege to support extraordinary organizations and people committed to serving others with dignity and compassion.

With gratitude,

Daniel J. Bader



Our Grants

**WHAT YOU DO TODAY
CAN IMPROVE ALL YOUR
TOMORROWS.**

- RALPH MARSTON

American Writer





Alzheimer's & Healthy Aging

TOTAL GRANTS

61

TOTAL DOLLARS

\$2,018,065

GRANTEE HIGHLIGHT:

Artists for the Humanities

Artists for the Humanities (A4TH) supports homeless military veterans and at-risk community populations who have experienced trauma by offering expressive art, art therapy, and supportive art programs combined with mental health counseling. A4TH helps individuals solve their problems and improve their quality of life through the healing power of art and comprehensive mental health support. A4TH created the Return & Recovery Program for Military Veterans (RRPMV) in September 2009 and has 13 years of experience using expressive art and mental health guidance to help veterans find solutions to homelessness.

GRANT BREAKDOWN:

\$653,500

Critical and Basic Needs for Older Adults

\$506,750

Services and Support for Alzheimer's and Other Dementias

\$450,665

Education, Training, & Awareness

\$363,450

Programming for Healthy Aging

\$43,700

Retirement & Older Adult Employment



Alzheimer's – Israel

TOTAL GRANTS

23

TOTAL DOLLARS

\$1,247,500

GRANTEE HIGHLIGHT:

Israel Elwyn

Israel Elwyn envisions a society where individuals with disabilities are recognized as full citizens with equal rights. The organization focuses on collaboration with individuals with disabilities and the broader community. To maintain their innovative and forward-thinking approach, everyone is empowered to pursue their own aspirations, regardless of ability, fostering an environment where inclusivity and diversity are celebrated.

GRANT BREAKDOWN:

\$632,000
Family Resilience

\$615,500
Education & Awareness



Community Matters

TOTAL GRANTS

75

TOTAL DOLLARS

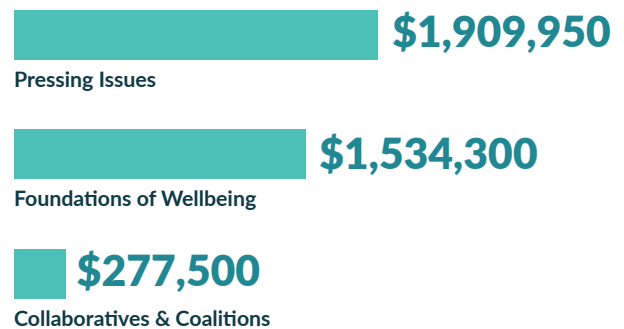
\$3,721,750

GRANTEE HIGHLIGHT:

Hmong American Friendship Association

The Hmong American Friendship Association envisions a healthy, educated, and empowered Southeast Asian community. Its mission is to improve self-sufficiency within this community and to preserve and share its culture throughout the Greater Milwaukee Area. Through a variety of programs and services, Hmong American Friendship Association aims to address the unique challenges faced by community members, including language barriers, access to education, and economic opportunities.

GRANT BREAKDOWN:





FEAR THE HOUNDS

Jewish Education

TOTAL GRANTS

11

TOTAL DOLLARS

\$420,000

GRANTEE HIGHLIGHT:

Bader Hillel High

Bader Hillel High (BHH) cultivates confident, dedicated, and inspired Jewish individuals who are empowered to realize their unique potential. This is accomplished through a thorough, uncompromising, and relevant education in both Judaic and General Studies. BHH offers a comprehensive education tailored to each student's needs, preparing them for success in college, career, and life.



Neighborhood Engagement

TOTAL GRANTS

25

TOTAL DOLLARS

\$754,650

GRANTEE HIGHLIGHT:

Westcare Wisconsin

WestCare focuses on helping individuals facing economic, employment, health, and environmental challenges by providing essential services like food, housing, and clothing. The organization supports youth leadership, job readiness, and community projects.

Over the summer, 40 residents enjoyed an educational trip to the Milton Historical Society, a nonprofit dedicated to preserving and sharing Milton's history. In addition, the organization's focus is on agricultural education, youth empowerment, and promoting healthy lifestyles. Key initiatives include CSA programs, 4-H activities, and educational workshops, all aimed at expanding market reach, empowering youth, and strengthening local agriculture.

GRANT BREAKDOWN:





**ORGANIC
THERAPY PROJECT**

A white rectangular sign with a black border and a drop shadow effect. The text is in a bold, sans-serif font. The background of the sign has a faint, repeating pattern of the word 'ORGANIC'.

Program Related Investments (PRIs)

TOTAL PRIs

6

TOTAL DOLLARS

\$2,925,000

PRI HIGHLIGHT:

Center for Veterans Issues

The Center for Veterans Issues, Inc. was established in response to persistent frustrations faced by veterans returning from the Vietnam War. The Center for Veterans Issues, Inc. offers housing and supportive services aimed at enhancing the quality of life for all veterans, their families, and the communities of which they are a part.



Huarache



WINGS



ENCHILADAS



Enchiladas



Tamales y Atole



Familia de Todos
Where Everyone is Home

Familia de Todos
Where Everyone is Home

Since
MARTA'S



The Arts

TOTAL GRANTS

39

TOTAL DOLLARS

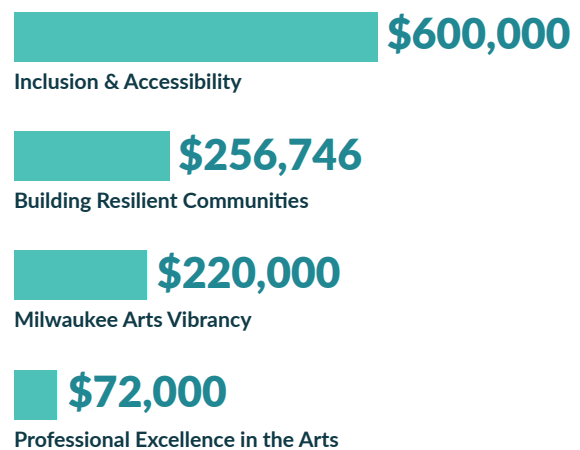
\$1,148,746

GRANTEE HIGHLIGHT:

La Familia De Arte

Using the Arts to Help Our Community Thrive nurtures creativity in disadvantaged areas, especially Milwaukee's near south side. By engaging families in various arts like ceramics, gardening, and music, the initiative spreads beauty and fosters community. Inspired by Sister Tomasita's belief that creativity prevents destruction, it emphasizes the importance of art for all ages. This past school year, the organization collaborated with several schools' after-school programs and conducted a two-month residency with Arts@Large, working with students in its gallery space. These engagements invited students ages 12 and older to apply to an internship program where they received a stipend, worked with adult artists on public art pieces, and created ceramics for the organization's fundraisers. The summer program supported about 40 youth and continued as an after-school program during the school year.

GRANT BREAKDOWN:





Urban Education

TOTAL GRANTS

22

TOTAL DOLLARS

\$865,900

GRANTEE HIGHLIGHT:

SHARP Literacy

SHARP Literacy has nearly 30 years of experience providing arts and tech-integrated programming to students from underserved neighborhoods, aligning with a city-wide STEAM initiative. The program positively impacts a diverse student population, with 85 percent coming from economically disadvantaged families. SHARP offers these workshops at no charge to schools. SHARP received funding for inclusive arts-integrated programming at two schools: Malaika Early Learning Center and Messmer St. Mary. Both schools are located in the 53212 ZIP code.

GRANT BREAKDOWN:

\$578,400
School Culture & Climate

\$287,500
Student Achievement



Youth Development

TOTAL GRANTS

75

TOTAL DOLLARS

\$2,927,202

GRANTEE HIGHLIGHT:

MKE Urban Stables

MKE Urban Stables, located in Milwaukee's Bayview neighborhood, offers equine-assisted therapy and learning programs for at-risk youth and veterans, while also strengthening police relations through outreach programs. Partnering with organizations like Rawhide Youth Services and U.S. Department of Veterans Affairs Medical Center, the facility features 24 horse stalls, indoor and outdoor riding arenas, and a multi-purpose community room. As the first in the nation to combine these services with mounted police patrol, MKE Urban Stables serves as a model for community engagement and therapeutic innovation. The organization has served over 530 at-risk, vulnerable people from the greater Milwaukee area.

GRANT BREAKDOWN:





LISSAN



TECH CAREERS



TUKE.TV

Social Equality

TOTAL GRANTS

55

TOTAL DOLLARS

\$2,692,000

GRANTS OVERVIEW:

Helping people, young and old, live enriching lives by attaining the academic skills and knowledge to succeed; inspiring cultural connection and pride through positive media exposure; and stimulating the vitality of International economies.

GRANT BREAKDOWN:





**LEGAL AID SOCIETY
OF MILWAUKEE**



MASARYK UNIVERSITY



**QUEEN'S UNIVERSITY
AT KINGSTON**

Legacy

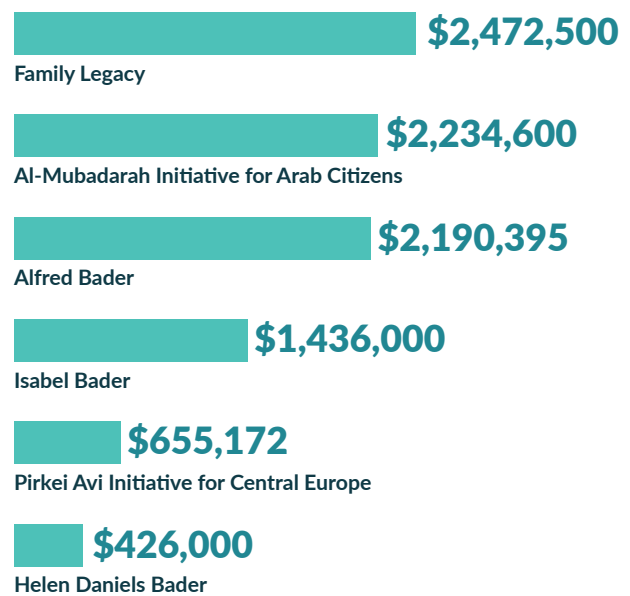
TOTAL GRANTS
144

TOTAL DOLLARS
\$9,414,667

GRANT OVERVIEW:

For over 30 years, Bader Philanthropies has supported initiatives inspired by Dr. Alfred and Isabel Bader, and Helen Daniels Bader. Their efforts focus on advancing education, expanding arts accessibility, nurturing leadership in marginalized communities, and improving the health of older adults across the U.S., Canada, Central Europe, and Israel.

GRANT BREAKDOWN:







Shared Impact

**ALL DREAMS ARE WITHIN
REACH. ALL YOU HAVE
TO DO IS KEEP MOVING
TOWARDS THEM.**

- VIOLA DAVIS

American Actress and Film Producer



2024 Convenings

EVENTS

87

ATTENDEES

1,917

ORGANIZATIONS

39

Bader Philanthropies has a longstanding commitment to bringing people of diverse perspectives together around issues of social concern. Convenings are organized by the Foundation and our nonprofit partners who are thought leaders with vast networks.

CONVENINGS

Participants

414 LIFE
 African American Leadership Alliance MKE
 Bader Hillel Academy
 BizStarts Milwaukee, Inc.
 Black Health Coalition of Wisconsin
 City of Milwaukee
 City on A Hill, Inc.
 Cristo Rey Jesuit High School Milwaukee, Inc.
 Helen Bader Institute for Nonprofit Management
 Helen Bader Institute for Social Welfare
 Hispanic Professionals of Greater Milwaukee
 Imagine MKE, Inc.
 Jewish Community Relations Council
 MENTOR Greater Milwaukee, Inc.
 Milwaukee Bucks
 Milwaukee Habitat for Humanity
 Milwaukee Jewish Federation
 Milwaukee Public Schools Foundation, Inc.
 Nonprofit Management Fund
 North Central Service Club, Inc.
 OneHope27
 Riverworks Development Corporation
 Rotary Club of Milwaukee, Inc.
 Serenity Inns, Inc.
 Skyrocket Education, Inc.
 The Opportunity Center
 The Olga Lengyel Institute for Holocaust Studies and Human Rights
 Unity in Motion, Inc.
 University of Wisconsin - Milwaukee
 WestCare Wisconsin, Inc.
 Wisconsin Faith Voices for Justice
 Wisconsin Women's Business Initiative Corporation
 Yeshiva Elementary School-Milwaukee, Inc.

Impact Snapshot

In the 2024 FY, 443 grantees served an estimated...



243,723

Individuals



62,752

Students



120,922

Youths



73,362

Older Adults



155,335

Attendees at 977
community-based
events



265,000+

Healthy meals
provided



600,000+

Pounds of fresh
food provided



4,288

Individuals were
paired up with
mentors

The median annual revenue of our grantees was **\$1.4 million.**

The median grant amount we gave was **\$40,000.**

The most commonly used keyword in our grant descriptions is: **community.**



1,951

Scholarships awarded totaling \$789,625



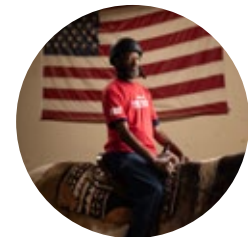
1,006

Partnerships made between organizations



5,000

Children received free dental care



883

Hours of equine-assisted therapy given to veterans



3,720

Older adults were able to stay in their homes



100

Units of quality housing stock added to the market



240

People were helped to acquire a professional certification



314

People were able to enroll in post-secondary education

2024 Engagement

Neighborhood Engagement remains laser focused on creating fellowship for our neighbors through Chat with Bader, our annual Bader BBQ and the Summer Cultural Concert Series. Milwaukee's Juneteenth Day is now known as one of the largest commemorations in the country offering an immersion, historical and cultural experience. The event has become an annual tradition for many people. This past year, adults of all ages had the opportunity to visit the last authenticated stop on the Underground Railroad in Milton, WI. And the Inaugural Bader Back to School Event helped parents get their young scholars ready for the first day of school with haircuts, new shoes, manicures and a backpack of school supplies.



BADER BBQ



JUNETEENTH DAY



CHAT WITH BADER



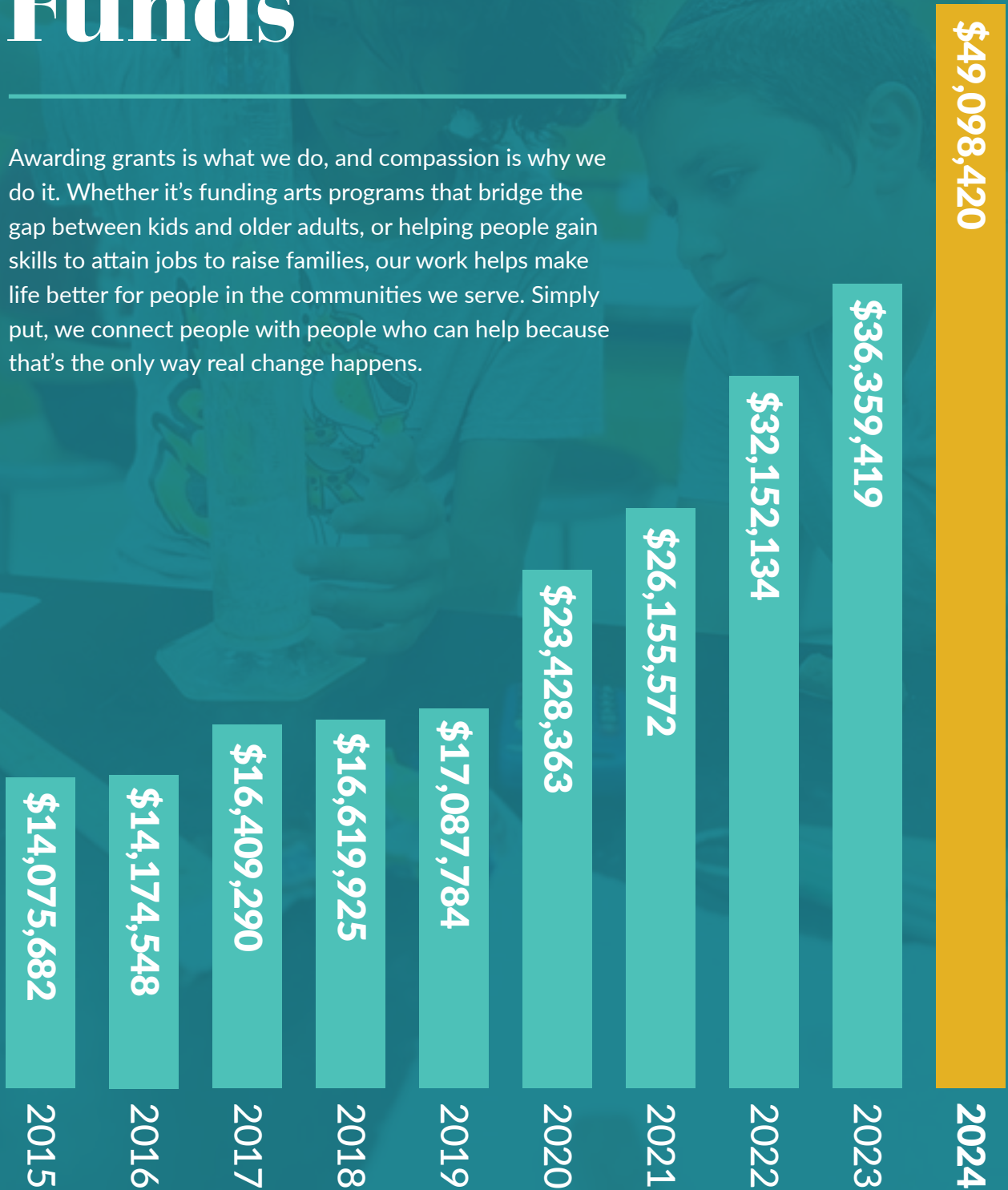
BADER BACK TO SCHOOL



TRUNK OR TREAT

Distributed Funds

Awarding grants is what we do, and compassion is why we do it. Whether it's funding arts programs that bridge the gap between kids and older adults, or helping people gain skills to attain jobs to raise families, our work helps make life better for people in the communities we serve. Simply put, we connect people with people who can help because that's the only way real change happens.



Approved Funding by Grant Area



11 EMPLOYMENT \$531,000 12 COLLABORATIVE GRANTS \$513,550 13 JEWISH EDUCATION \$420,000
 14 LEADERSHIP DEVELOPMENT \$50,000

Grants & PRIs

2024 GRANTS & PRIs AWARDED

SEPTEMBER 1, 2023 THROUGH AUGUST 31, 2024

4th Dimension Sobriety, Inc.	Advancement of the Information Age in Israel (a.r.)	Black Arts MKE, Inc.
A Better Tomorrow for Mommies Inc.	ARA ART, z.s.	Blair Area Foundation, Inc.
A Better Wisconsin Together Institute, Inc.	Arous Elbahar Association for Women in Jaffa (RA)	Board of Regents of the University of Wisconsin System - University Of Wisconsin Parkside
A.F.A.R., Inc.	Art Start Incorporated	Boys & Girls Clubs of Greater Milwaukee, Inc.
Access Ability Wisconsin Inc	ARTAK Charity Foundation	Boys and Girls Clubs of Dane County, Inc.
Acco Theatre Center (a.r.)	ArtWorks For Milwaukee, Inc.	Branco Weiss Institute - Think, Innovate, Educate (a.r.)
Accredited Training Center of the Personal Development Methods	Ascension Wisconsin Foundation, Inc.	BraveHearts Therapeutic Riding and Educational Center
Active Seniors' Options, Inc.	Ashuja'an Association for Juvenile Diabetes (a.r.)	Bridge to Brighter Inc.
ACTS Community Development Corporation	Association of Friends of the Israel Museum in Jerusalem (a.r.)	Britain Yearly Meeting of the Religious Society of Friends (Quakers)
African American Chamber of Commerce of Wisconsin, Inc.	Athena Fund – Laptop for Every Teacher (a.r.)	Broadscope Disability Services, Inc.
Age Well Arrowhead Inc.	Bader College - Queen's University	Candid
Agrace Hospicecare Foundation, Incorporated	Bader Hillel High, Inc.	Care Net Pregnancy Center of Milwaukee, Inc.
Ajeec - Negev Institute (a.r.)	Bayview Foundation, Inc.	Casa Romero Renewal Center, Inc.
Alano Foundation	Beating The Odds Saving A Life Charity Inc.	CEDU - Centre for Democracy in Education
Albany Pro Musica Inc	Beit-Israel Business Community (a.r.)	Center for Self-Sufficiency, Inc.
All Hands Boatworks, Inc.	Bellin College, Inc.	Central Europe Center For Research & Documentation Inc.
All-In Milwaukee, Inc.	Bembé Drum and Dance, Inc.	Centro Legal Por Derechos Humanos, Inc.
Alrad Association (a.r.)	Best Buddies International, Inc.	Cesta von o.z.
Alzheimer's Disease and Related Disorders Association, Inc. - Wisconsin Chapter	Beterem The National Center for Children's Safety and Health (a.r.)	Chabad Lubavitch - Czech Republic ops
Amanina (a.r.)	Bethlehem Lutheran Church Corporation	Chabad Lubavitch of Waukesha, Inc.
American Chemical Society	Beyond Vision, Inc.	
American Friends of Livnot Ulehibanot	Big Brothers and Big Sisters of Metropolitan Milwaukee, Inc.	
American Friends of The Hebrew University Inc	BizStarts Milwaukee Inc.	
Appleseeds Association for		

Charles Antetokounmpo Family Foundation	Cyril Mooney Education, z.s.	Florentine Opera Company, Inc.
Children's Crisis Treatment Center, Inc.	Czech Chemical Society	Fondy Food Center, Inc.
Children's Dyslexia Centers, Inc.	Czech Fundraising Center	Food For Health, Inc.
Children's Hospital of Wisconsin Foundation, Inc.	Danceworks Inc.	Fostering Community Incorporated
Church Health Services, Inc.	Data You Can Use, Inc.	Fox Valley Memory Project, Inc.
Citizens Build a Community (a.r.)	Day By Day Warming Shelter, Inc.	Franciscan Peacemakers, Inc.
City of Milwaukee	Dive Maky	Friends by Nature - Community Strength (a.r.)
City On A Hill, Inc.	DogsInVests, Inc.	Friends of JCC Krakow Inc
Civic Leadership (a.r.)	Dryhootch USA Inc.	Friends of Schlitz Audubon Nature Center, Inc.
Civic Music Association of Milwaukee	Early Music Now, Inc.	Friends of Tel-Aviv Sourasky Medical Center Inc
Clement Manor, Inc.	Ebenezer Stone Ministries, Inc.	Friends of the Marquette Driftless Area
COA Youth and Family Centers, Inc.	eduRoma	Friendship Circle Delaware Valley North, Inc.
College Possible	Eisenhower Center, Inc.	Gerald L. Ignace Indian Health Center, Inc.
Community Center for Immigrants Incorporated	Elmbrook Senior Taxi, Inc.	GiGi's Playhouse-Milwaukee, LLC
Community Clothes Closet, Inc.	ElSabar Association (a.r.)	Girl Scouts Of Wisconsin Southeast, Inc.
Community Foundation of Southern Wisconsin, Inc. - Crawford County Community Fund	EMDA - Dementia, Alzheimer's and Related Diseases Association of Israel (a.r.)	Girls on the Run of Southeastern Wisconsin, Inc.
Community Projects Committee, Inc.	Employ Milwaukee, Inc.	Good News Project, Inc.
Compassionate Home Health Care, Inc.	Enosh - The Israeli Mental Health Association (a.r.)	Goodwill Industries of Southeastern Wisconsin, Inc.
Concordia University, Inc.	Ephesians Missionary Baptist Church, Inc.	Grand Avenue Club, Inc.
Congregation Cnesses Israel Inc.	Epilepsy Families Southeast Wisconsin, Inc.	Grantmakers In Aging, Inc.
Congregation of St. John's Cathedral	ERAS Senior Network, Inc.	Great Lakes Community Conservation Corps, Incorporated
CORE/El Centro, Inc.	ETP Slovakia - Center for Sustainable Development	Great Lakes Native American Elders Association, Inc.
Council For Relationships	Evolve Community Inc.	Greater Milwaukee Committee for Community Development
Council on Foundations, Inc.	Family Promise of Waukesha County, Inc.	Greater Milwaukee El Sistema, Inc.
Cream Skills Inc.	Family Sharing of Ozaukee County, Inc.	Greater Milwaukee Foundation, Inc.
Cross Evangelical Lutheran Church	Federation of Jewish Communities of Romania (FEDROM)	Greater New Birth Church, Inc.
Culinary Education Program, Inc.	Feeding America Eastern Wisconsin, Inc.	
Curtain Call - Theater, Community, Society (R.A.)	Fisc Consumer Credit Counseling Of Door County, Inc.	

GRANTS & PRIs (CONT.)

Green Bay Police Department	Inner-City-Computer Stars Foundation, Inc.	Kenosha Area Family and Aging Services, Inc.
Gvanim Association for Education & Community Involvement (a.r.)	Institute of Contemporary History of the Czech Academy of Sciences	KHER, z.s.
Gvurot Association (a.r.)	Israel Elwyn (a.r.)	Kids from Wisconsin, Ltd.
Hadassah Academic College (a.r.)	Israel Medical Association	Kingdom Prep Lutheran High School, Inc.
HaGal Sheli (a.r.)	itworks - Empowering People (a.r.)	Koret Israel Economic Development Funds (a.r.)
HAKEM (PSC)	J.K. Lee City Youth Martial Arts Program, Inc.	Kulna Jerusalem (a.r.)
Harry and Rose Samson Family Jewish Community Center, Inc.	Jacarrie Kicks For Kids, Inc.	La Causa, Inc.
Hasoub - Organization for Promoting Entrepreneurship and Technology in Arab Society (a.r.)	Jerusalem Academy of Music and Dance (a.r.)	La Familia De Arte, Inc.
Haus of Peace, LLC	Jerusalem Institute for Policy Research (a.r.)	Lassid Ministries, Inc.
Have-Rut (p.s.c.)	Jerusalem Inter-Cultural Center (a.r.)	Latino Arts Inc.
Hillel Academy, Inc.	Jerusalem International YMCA (a.r.)	Lauder's Kindergarten, Elementary School and Grammar School at the Jewish Community in Prague
HIR Wellness Institute, Inc.	Jewish Beginnings Lubavitch Preschool, Inc.	Lead2Change, Inc.
Hispanic Professionals of Greater Milwaukee, Inc.	Jewish Family Services, Inc.	Leaders of the Future (a.r.)
Historic Haymarket Milwaukee, Inc.	Jewish Funders Network	Legal Aid Society of Milwaukee, Inc.
Historic Milwaukee, Inc.	JFS Housing, Inc.	Life's Door - Coping with Illness and Loss LTD (CC)
Hmong/American Friendship Association, Inc.	Jindas - the Society for Urban Renewal in Lod (a.r.)	Lifestriders Inc.
Homer Blow Foundation Incorporated	JobsWork MKE, Inc.	Lighthouse Youth Center, Inc.
Hometown Heroes, Inc.	Joint Israel (PBC)	Lissan (a.r.)
Hope House of Milwaukee, Incorporated	Journey21, Inc.	Literacy Lab
Hope Through Restoration Inc.	Joy Engine, Inc.	Literacy Services of Wisconsin, Inc.
I'lam - Arab Center for Media Freedom, Development and Research (a.r.)	Joyce's House of Milwaukee Inc.	Lo Omdot Me'negged - Assisting Women in the Cycle of Prostitution (a.r.)
IDI Foundation Inc	Junior Achievement of Wisconsin, Inc.	Local Initiatives Support Corporation
Impact Cubed	Just Us And Books Inc.	Lutheran Counseling and Family Services of Wisconsin, Inc.
Injaz - Center for Professional Arab Local Governance (a.r.)	Kafa Association for Social Change in the Negev (a.r.)	Lutheran Social Services of Wisconsin and Upper Michigan, Inc.
Inner City Athletics Inc.	Kandu Industries, Inc.	

Maccabi Healthcare Services - North District	Milwaukee Jewish Free Loan Association, Inc.	Neighborhood House of Milwaukee, Inc.
MacCanon Brown Homeless Sanctuary, Inc.	Milwaukee Kickers Soccer Club, Inc.	Neu-Life Community Development, Inc.
Machickanee Players, Inc.	Milwaukee Parks Foundation, Inc.	New Berlin Senior Taxi, Inc.
Machshava Tova (a.r.)	Milwaukee Public Library Foundation, Inc.	NewThreads of Hope, Inc.
Magaley Shema (a.r.)	Milwaukee Public Museum, Inc.	Next Act Theatre, Inc.
Malaika Early Learning Center, Inc.	Milwaukee Public Schools	Next Door Foundation, Inc.
Malta Conferences Foundation	Milwaukee Public Schools Foundation, Incorporated	NextGen Education Fund
Marcus Center for the Performing Arts, Inc.	Milwaukee Public Schools-Dr. Martin Luther King Jr. Elementary School	Nini Czopp Association (a.r.)
Marquette University	Milwaukee Repertory Theater, Inc.	North American Conference on Ethiopian Jewry (NACOEJ) - Israel (a.r.)
Martin Luther King Economic Development Corporation	Milwaukee Riverkeeper Inc.	North Shore Montessori School, Inc.
MATAN - Investing in the Community (a.r.)	Milwaukee Simba S.C., Inc.	Northcott Neighborhood House, Inc.
Mati Center for Fostering Initiatives and Business Development Center Jerusalem (a.r.)	Milwaukee Tennis & Education Foundation, Inc.	Nova Counseling Services, Inc.
McIntosh Memorial Library	Milwaukee Urban League	Older Adults Technology Services from AARP
MENTOR Greater Milwaukee, Inc.	Milwaukee Youth Symphony Orchestra, Inc.	Olga Neighborhood Wellness Services Inc.
Messmer Catholic Schools, Inc.	Milwaukee Youth Theatre, Inc.	Olim Beyahad - Bandelay Woodelay, Leadership and Employment Excellence for Ethiopian University Graduates (a.r.)
Milwaukee Alliance for Jewish Reconnection, Inc.	Mission Investors Exchange Inc	OneHope27, Inc.
Milwaukee Art Museum, Inc.	Mitchell Street Arts Collaborative Incorporated	OpenEye, o.s.
Milwaukee Christian Center, Inc.	MKE Urban Stables, Inc.	Optimist Theatre, Inc.
Milwaukee Diaper Mission, Inc.	MobiliSE, Inc.	ORANIM - Academic Institution for Education of the Kibbutz Movement (a.r.)
Milwaukee Downtown, Inc.	Mr. Bob's 'Under the Bridge,' Inc.	Organization for Aid to Refugees (OPU)
Milwaukee Film, Inc.	Museum of Romani Culture	Orr Shalom for Children and Youth at Risk L.T.D. (P.B.C.)
Milwaukee Habitat for Humanity, Inc.	Museum of Wisconsin Art, Inc.	Our Community Ltd.
Milwaukee Homeless Veterans Initiative, Inc.	Muslala Art-Trax (r.a.)	Our Scholarship, Inc.
Milwaukee Institute of Art & Design, Inc.	My Way Out, Inc.	Paamonim Charity Organization (a.r.)
Milwaukee Jazz Institute Inc	Nachshonim Youth Clubs (a.r.)	Paine Art Center & Gardens, Inc.
Milwaukee Jewish Day School, Inc.	Nadacia Pontis	PAQ Research, z.u.
	NAMI Southeast Wisconsin, Inc.	
	National Latino Law Enforcement Organization - Milwaukee Chapter, Inc.	

GRANTS & PRIs (CONT.)

Pastors United Community Advocacy, Inc.	Ruach, Inc.	Sto Skupin
Pathfinders Milwaukee, Inc.	Saint Francis Children's Center, Inc.	Street Angels Inc.
PEARLS for Teen Girls, Inc.	Samad's House Corp.	Summit Educational Association, Inc.
Pets Helping People, Inc.	Sanad Association - Mentoring and Volunteering (a.r.)	TALMA -The Israeli Program for Excellence in English and Strengthening Public Education Ltd. (psc)
Philanthropy Europe Association	School Choice Wisconsin, Inc.	Tamar - Interdisciplinary Center (a.r.)
Phoenix Multisport, Inc.	Seal Inc.	Tawasul Guide (a.r.)
Pitchon Lev (a.r.)	Seeds of Health, Inc.	TBEY Arts Center, Inc.
Pravo Vibora	Senior Companion Program, Inc.	Teach For America, Inc.
Present Music, Inc.	Serenity Inns, Inc.	TeamTeal365, Inc.
Professional Fire Fighters of Wisconsin Charitable Foundation, Inc.	Serving Older Adults of Southeast Wisconsin, Inc.	Tech Careers (a.r.)
Project Kindred, Inc.	Shaharit - Creating a Common Denominator (a.r.)	Teens Grow Greens, Inc.
Project R.E.T.U.R.N., Inc.	Shalem Healing, Inc.	Tel Aviv University
Qudra - Arab Philanthropists Network (r.a.)	Silver Spring Neighborhood Center, Inc.	Ten Gav (a.r.)
Quick Kosher LLC	Skilled Volunteers for Israel	Tenufa Bakehila (a.r.)
R.U.B.I.E.S. Corporation	Skyrocket Education Inc	The Association for Economic Empowerment for Women (a.r.)
Raising The Bar, Inc.	SLOVO 21, z. s.	The Association for Senior Citizens of the Eshkol Region (a.r.)
Rashi Foundation (a.r.)	Sojourner Foundation, Inc.	The Benedict Center, Inc.
REDgen, Inc.	Solomon Community Temple United Methodist Church, Inc.	The Cathedral Center, Inc.
Relief International	Sonduk El Yanabia (a.r.)	The Collective Impact Initiative - The Partnership for a Breakthrough in Arab Employment Ltd. (CC)
Retired Senior Volunteer Program of Rock County, Inc.	SOPHIA of Waukesha, Inc.	The Community Warehouse, Inc.
Richland Center-Santa Teresa Sister City Project, Inc.	Southside Organizing Committee, Inc.	The Donna Lexa Community Art Centers, Inc.
Risen Savior Evangelical Lutheran Church, Inc.	Spring Valley Seniors Staying Put, Inc.	The Education, Culture, and Neighborhood Renewal Company in Tel Aviv founded by the Jewish Agency of Israel (PBC)
River Revitalization Foundation, Inc.	St. Joan Antida High School, Inc.	The Friendship Circle, Inc.
Riveredge Nature Center, Inc.	St. Marcus Evangelical Lutheran Church, Inc.	
Riverworks Development Corporation	St. Philip Lutheran Church	
Rocketship Education Wisconsin, Inc.	St. Vincent De Paul Society of Milwaukee	
ROMEA, o. p. s.	STEM Forward, Inc.	

The Fund for Innovative Education (a.r.)	The Welcome Home Foundation Incorporated	Wisconsin Conservation Voices, Inc.
The Gathering of Southeast Wisconsin, Inc.	The Women's Center, Inc.	Wisconsin Conservatory of Music, Inc.
The Israel Center for Educational Innovation (a.r.)	Thompson Center on Lourdes, Inc.	Wisconsin Institute for Healthy Aging, Inc.
The Israel Healthcare Foundation	Tikkun Ha-Ir of Milwaukee, Inc.	Wisconsin Intergenerational Orchestra, Inc.
The Israeli Opera - Tel Aviv - Yafo (a.r.)	Torah Academy of Milwaukee for Girls, Inc.	Wisconsin Lutheran Child & Family Service, Inc.
The Israeli Volunteering Council (a.r.)	TRUE Skool, Inc.	Wisconsin Parkinson Association, Inc.
The Lutheran Home, Inc.	United Methodist Children's Services of Wisconsin, Inc.	Wisconsin Philanthropy Network, Inc.
The Milwaukee Jewish Federation, Inc.	United Neighborhood Centers Of Milwaukee, Inc.	Wisconsin Policy Forum, Inc.
The Milwaukee Rescue Mission	United Way of Greater Milwaukee & Waukesha County, Inc.	Wisconsin Veterans Network, Inc.
The Milwaukee Science Education Consortium, Inc.	University Of Edinburgh	Wisconsin Voices, Inc.
The National Committee for Heads of Arab Local Authorities in Israel (a.r.)	University of Nebraska Foundation	Wisconsin Woodworkers Guild, Incorporated
The National Project for the Ethiopian Community in Israel Ltd. (PBC)	USA Swimming Foundation	Word of Hope Ministries, Inc.
The OccuPaws Guide Dog Association	Vernon Economic Development Association, Inc.	World Central Kitchen, Inc.
The Olga Lengyel Institute for Holocaust Studies and Human Rights	Versiti Wisconsin, Inc.	Wuste Tzega – Center for Culturally Adapted Psychotherapy in a Changing Reality Ltd. (CC)
The Province of St. Joseph of the Capuchin Order, Inc.	Via Foundation	Xalaat Africa Drum and Dance for Life Ltd.
The Rembrandt House Museum	Victory Garden Initiative, Inc.	Yachdav - The Association for the Elderly in Sha'ar Ha'Negev (a.r.)
The Running Rebels Community Organization, Inc.	Village Way - Yemin Orde Educational Initiatives (a.r.)	Yedidim Roadside Assistance (a.r.)
The Season of Culture in Jerusalem (a.r.)	Volunteer Center of Washington County, Inc.	Yeshiva Elementary School-Milwaukee, Inc.
The Sophie and Abram Stuchynski Israeli Alzheimer Medical Center Ramat Gan (a.r.)	Walker's Point Youth and Family Center, Inc.	Youth Frontiers, Inc.
The United Sports Club, Inc.	Walter Schroeder Aquatic Center, Ltd.	Yozmot Atid (a.r.)
The UWM Foundation, Inc.	Walworth County Food Pantry Inc.	Yuval Susan Fund (a.r.)
The Voter Project Fund	Westcare Wisconsin, Inc.	
The Waldorf School Association of the Delaware River Valley	Wild Space, Inc.	
	Wis Hope, Inc.	
	Wisconsin Adaptive Sports Association, Inc.	
	Wisconsin Community Services, Inc.	

BADER PHILANTHROPIES

Board & Staff



DANIEL J. BADER
President/CEO
Board of Directors



ALEX BADER
Technology & Administrative Assistant



DAVID M. BADER
Vice President
Board of Directors



LINDA C. BADER
Board of Directors



SANDRA BEDNARZ
Operations Director



MICHELLE BERRONG BADER
Board of Directors



DEIRDRE H. BRITT
Secretary, Board of Directors
Advisory Committee Chair:
Helen Daniels Bader Fund



BEN L. CALLIF
Vice President – Strategy & Culture



FRANK E. CUMBERBATCH
Vice President - Engagement



MARGARET FOSTER
Board of Directors
Advisory Committee Chair:
Isabel & Alfred Bader Fund



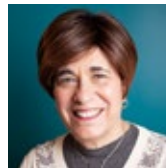
MERILOU V. GONZALES
Communications Director



BRIDGETT GONZALEZ
Grants Director



FRANK HARRIS, JR.
Neighborhood Engagement
& Safety Coordinator



LISA G. HILLER
Vice President - Administration



TAMARA LYNETTE HOGANS
Neighborhood Engagement Director



KRISTEN LIE
Grants Manager



CLAUDIA MARTINEZ
Grants Director



JERE D. MCGAFFEY
Chairman/Treasurer
Board of Directors



TYLER POULOS
Convenings & Event Manager



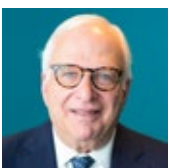
HELEN RAMON
Senior Grants Director



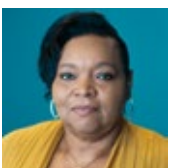
BRIAN REPINSKI
Information Technology
& Systems Director



TAYLOR ROBINSON
Communications & Design Specialist



JEFFREY ROSEN
Grants Director



LINDA K. RUCKER
Financial Administrator



ADINA SHAPIRO
Board of Directors



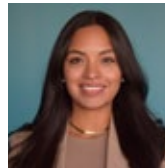
KIM THAO
Enterprise Innovation Director



FRANKIE THOMAS
Neighborhood Engagement
& Safety Coordinator



ROBERT TOBON
Grants Director



JASMIN TRESKE
Grants Director



MARIA LOPEZ VENTO
Vice President - Grants



BRANDON WIGLEY
Bader Leadership Institute Director



FRANCES KLITSNER WOLFF
Board of Directors



IRENE XIONG
Grants Administrative Assistant

INTERNS

MONCERRAT CERVANTES
Operations Intern

NECHAMA KITTNER
Operations Intern

HANNAH FREIREICH
Operations/Communications Intern

SAM SMULYAN
Operations/Financial Intern

SHOSHANA MEISTER
Operations Intern

WREN STEVENS
Operations/Communications Intern





**NO ACT OF KINDNESS,
NO MATTER HOW SMALL,
IS EVER WASTED.**

- AESOP

Ancient Greek Storyteller

Photo Credits: Bader Hillel, Center for Veteran Issues, Debbi Cooper, Down Syndrome Association of Wisconsin, Fork Farms, Holocaust Memorial Museum, Israel Elwyn, Jeffrey Cannady, La Familia De Arte, Lissan, Masaryk University, MKE Urban Stables, Phoenix Multisport, Queen's University at Kingston, Tech Careers, The Waldorf School Association of the Delaware River Valley, Timothy Meyer (Artworks & Photography), Tuke.TV, Vogue Dreams Pro, Westcare Wisconsin

BADER PHILANTHROPIES, INC.

3300 N. Dr. Martin Luther King, Jr. Drive
Milwaukee, WI 53212

Tel: (414) 224-6464 | Fax: (414)224-1441